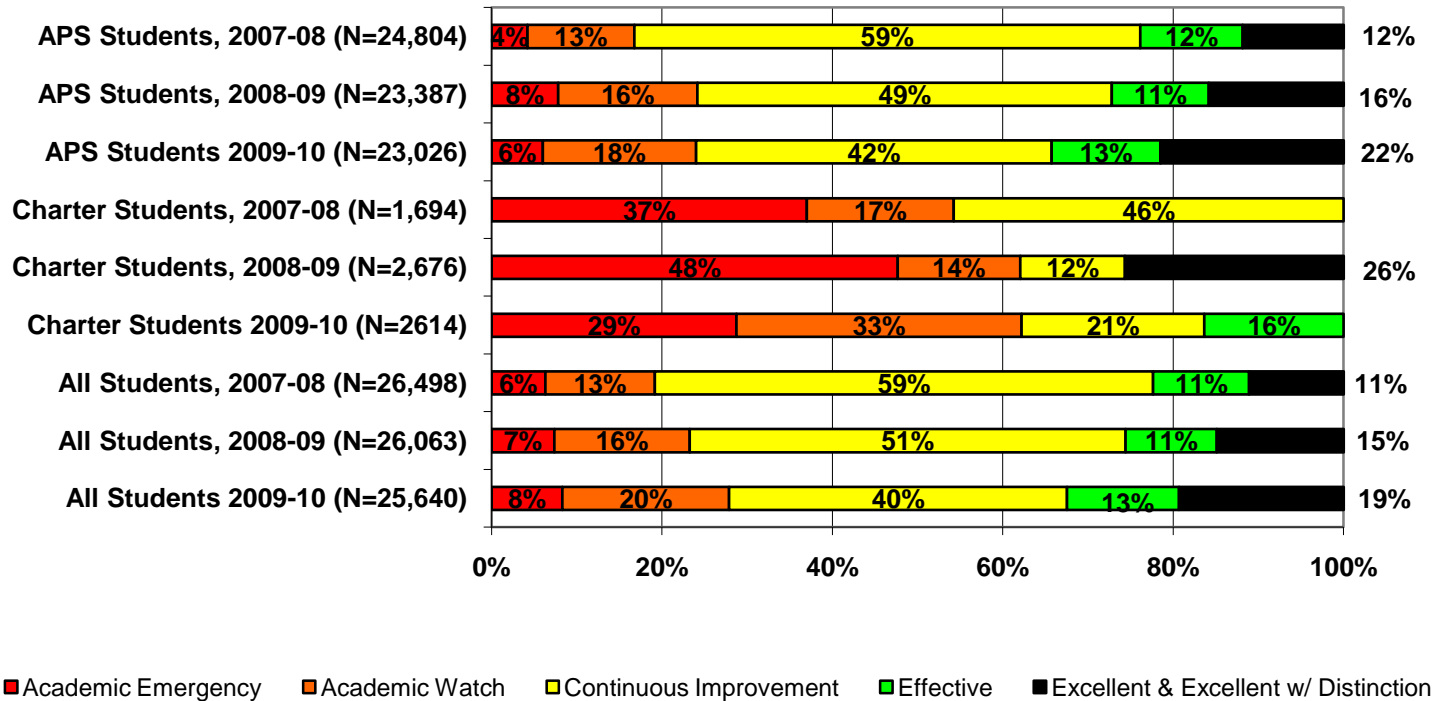




Detailed Analysis of School Performance in Akron (2009-10)

Graph I: Percent of Akron Students in Public Schools by State Designation (2007-08, 2008-09, and 2009-10)



Source: Ohio Department of Education interactive Local Report Card

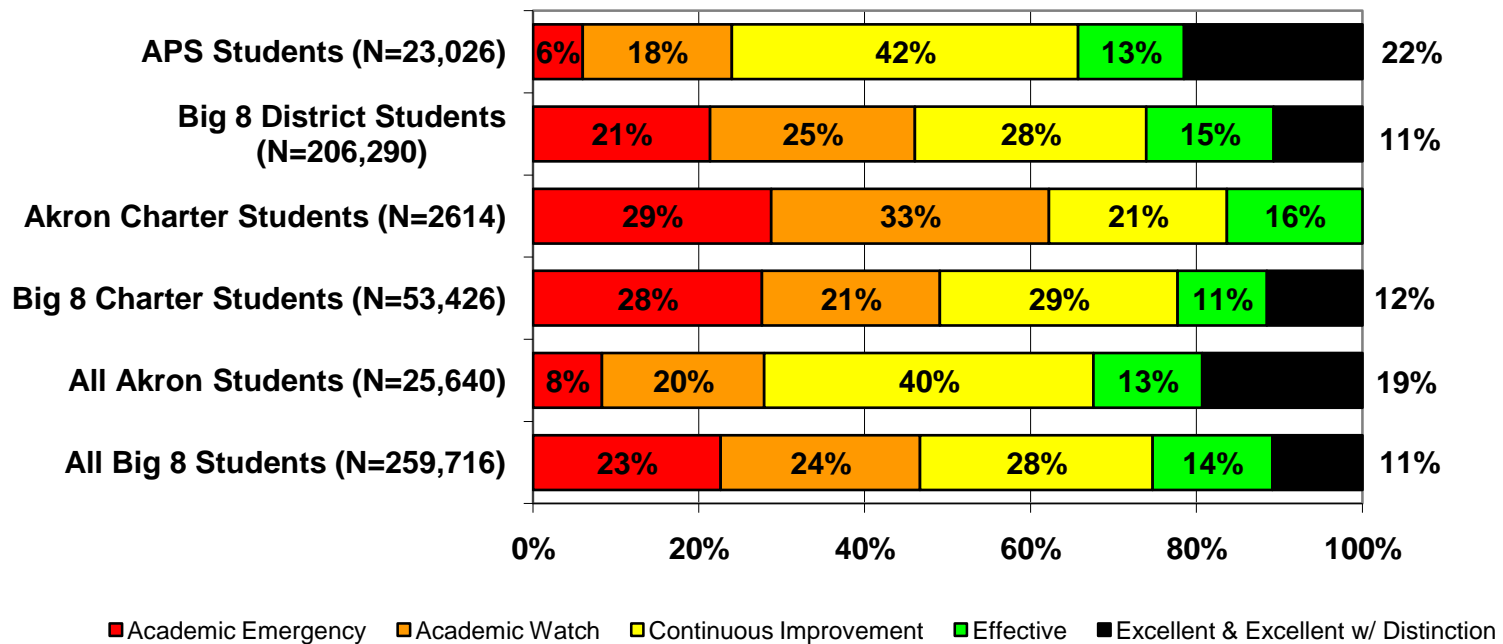
Note: This chart does not include students in schools that are unrated and students attending charter e-schools.

Percent of Akron Students in Public Schools (District and Charter) by State Designation.

Graph I shows the percent of Akron students in district and charter schools by state designation for the 2007-08, 2008-09, and 2009-10 school years.

The percent of Akron students (district and charter) attending a school rated A or B by the state was up in 2009-10, 32 percent versus 26 percent in 2008-09. Despite these gains, 28 percent of all Akron students were still in a school rated Academic Emergency or Academic Watch. This is a slide from the 2008-09 school year when just 23 percent of students attended schools in the state's two lowest categories. Akron district school students were more likely to attend a school rated Effective or Excellent (including Excellent with Distinction) than their district counterparts. Thirty-five percent of district students went to an A or B rated school, versus 16 percent of Akron charter students.

Graph II: Percent of Akron Students in Public Schools by State Designation versus the Big 8 Average*



Source: Ohio Department of Education interactive Local Report Card

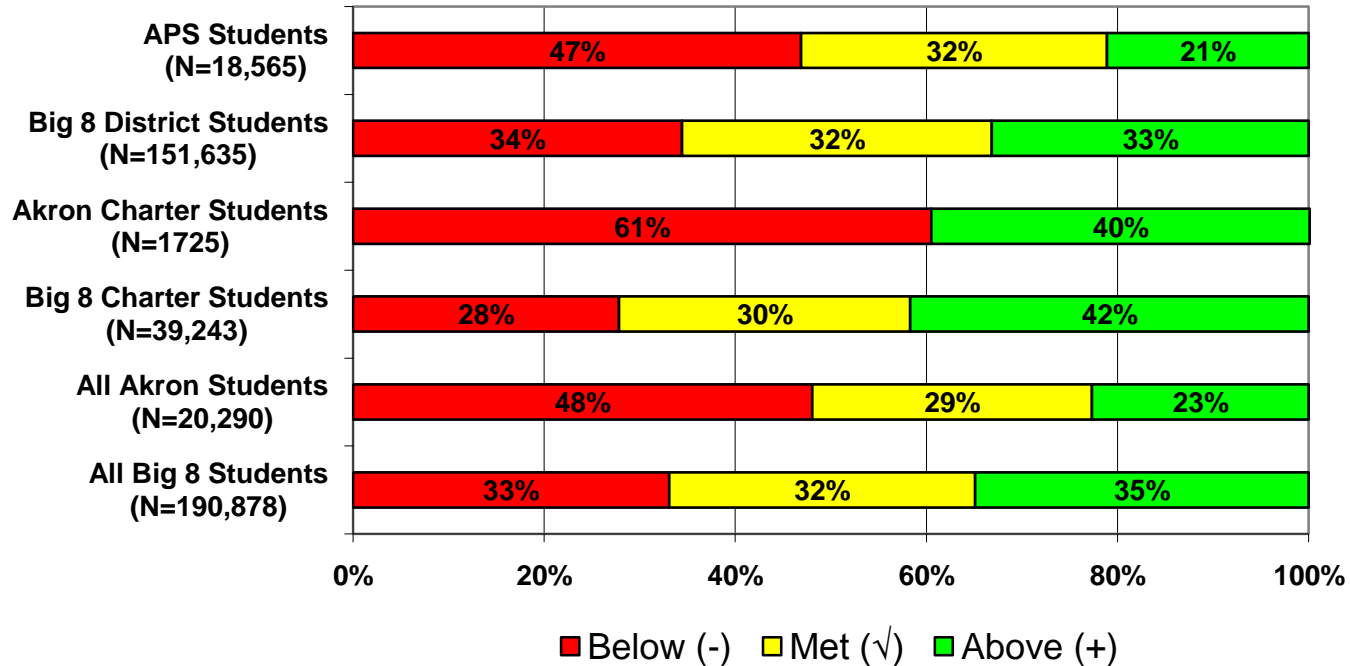
Note: This chart does not include students in schools that are unrated and students attending charter e-schools.

* The Big 8 districts are defined as Ohio's largest urban districts: Akron, Canton, Cincinnati, Cleveland, Columbus, Dayton, Toledo, and Youngstown.

Percent of Akron Students in Public Schools by State Designation versus the Big 8 Average. Graph II shows how Akron district and charter school students performed against the Big 8 averages for district and charter performance. This helps to put the performance of students in Akron into a larger context (e.g., how do they perform against other urban students in Ohio?).

Akron Public School District students were more likely to attend a school rated A or B by the state, as compared to their Big 8 District peers. Nearly 22 percent of Akron School District students went to a school rated Excellent (including Excellent with Distinction) while just 11 percent of Big 8 District students went to similar schools. Charter school students in Akron are far more likely than their Akron district peers to attend a school that is Academic Emergency or Academic Watch. Sixty-two percent of Akron charter students attend a school ranked D or F while only 24 percent of Akron district students attend such low-performing schools.

Graph III: Percent of Akron Students in Public Schools by Value-added Composite Score versus the Big 8 Average (2009-10)



Source: Ohio Department of Education interactive Local Report Card

Note: This chart does not include students in schools that did not receive a value-added composite score or students attending charter e-schools.

Percent of Akron Students in Public Schools by Value-added Composite Score versus the Big 8 Average. Ohio’s local report cards include each school’s “value-added”—how much progress students in grades four through eight made in reading and math over the course of one year compared to how much the state expected them to gain (for a detailed explanation go to: http://www.edexcellence.net/detail/news.cfm?news_id=735&id=130, and for information on changes made to the calculations this year, go to: <http://edexcellence.net/gadfly/index.cfm?issue=591#a6341>). Using this information Ohio determines if each school made “Above Expected Growth,” “Expected Growth,” or “Below Expected Growth.”

Students in public schools in Akron (district and charter) are less likely than their Big 8 peers to attend a school that met or exceeded the state’s growth expectations (52 percent of Akron students versus 67 percent of Big 8 students). More than 53 percent of students in Akron Public School District attend a school that achieved at least one year of academic growth last year, behind the Big 8 districts (at 65 percent) but ahead of Akron charter schools (at 40 percent).

Table I: Akron Public Schools (District and Charter) Ranked by Performance Index Score

The following pages list Akron’s public charter and district schools ranked by Performance Index (PI) score[†] for the 2009-10 school year. Numerous other performance indicators are also included, but the Performance Index score was selected for ranking the schools because it provides an overall indication of how well students perform on all tested subjects in grades 3 through 8 and the Ohio Graduation Test.

We strongly encourage readers to look closely at the number of standards met and the number of standards possible. A school with a large number of possible standards and possible standards met has gotten a large percentage of students to the state proficiency goals.

We also encourage readers to consider schools’ value-added results. Where the Performance Index reflects student achievement at one point in time, value-added tells us how a school is doing at helping its students make progress from year to year. For more on value-added, see Fordham’s value-added primer on our website: http://www.edexcellence.net/detail/news.cfm?news_id=735&id=130.

[†] The Performance Index score is calculated by multiplying the percentage of students that are untested, below basic/limited, basic, proficient, accelerated, or advanced by weights ranging from 0 for untested to 1.2 for advanced students. The totals are then summed up to obtain the school or district’s PI score. PI scores range from 0 to 120, and the state has set the goal for all schools to achieve a PI score of 100 or better. For a complete description of how the Ohio Department of Education calculates the PI score see their website here: <http://www.ode.state.oh.us/GD/DocumentManagement/DocumentDownload.aspx?DocumentID=29878>.

Table I: Akron Public Schools (District and Charter) Ranked by Performance Index Score

Rank	Building Name	Type	PI Score 09-10	PI Score 08-09	Designation 09-10	Overall AYP 09-10	# of standards met 09-10	# of standards possible 09-10	Value-added Composite 09-10	Enrollment	Grade Span
1	Akron Early College High School	District	109.5	104.9	Excellent	Met	11	11	--	268	9-12
2	Miller-South Visual Perf Arts Middle School	District	103.9	104.6	Excellent with Distinction	Met	13	13	Above	488	4-8
3	Firestone High School	District	100.7	101.1	Excellent	Met	12	12	--	1297	9-12
4	National Inventors Hall of Fame School, Center for STEM	District	100.3	0	Excellent	Met	5	6	Met	192	5-8
5	Ellet High School	District	97.3	97.6	Excellent	Not Met	12	12	--	1051	9-12
6	Windemere Elementary School	District	97.2	97.2	Excellent	Met	8	8	Met	339	K-5
7	King Elementary School	District	96	104.2	Effective	Not Met	5	8	Met	404	K-5
8	Hatton Elementary School	District	95.3	93.7	Excellent	Met	8	8	Met	514	K-5
9	Firestone Park Elementary School	District	92.3	94.5	Effective	Met	5	8	Below	365	K-5
10	Judith A Resnik CLC	District	92.2	100.2	Effective	Met	5	8	Below	384	K-5
11	Hyre Middle School	District	91.4	91.4	Excellent	Not Met	5	8	Above	805	6-8
12	Leggett Elementary School	District	91.1	88.5	Effective	Met	5	8	Met	316	K-5
13	Betty Jane Community Learning Center	District	90.5	89	Effective	Met	3	8	Below	444	K-5
14*	Schnee Learning Center	Charter	90.3	90	Effective	Not Met	6	12	--	173	9-12
14*	Ritzman Elementary School	District	90.3	83.1	Effective	Met	4	8	Above	339	K-5
16	Summit Academy Secondary - Akron	Charter	88.5	72	Continuous Improvement	Met	3	11	--	47	8-12,UNG
17	Hope Academy Brown St Campus	Charter	86.6	78.9	Effective	Met	6	15	Above	254	K-8
18	Litchfield Middle School	District	86.3	83.8	Continuous Improvement	Not Met	4	8	Met	599	6-8
19	Forest Hill Community Learning Center	District	85.7	84.5	Continuous Improvement	Met	2	8	Above	317	K-5
20	Garfield High School	District	84.8	89.2	Continuous Improvement	Not Met	3	12	--	1029	9-12
21	Smith Elementary School	District	84.6	86.1	Continuous Improvement	Met	4	8	Below	169	K-5
22	Rimer Elementary School	District	83.5	87.7	Continuous Improvement	Met	1	8	Below	275	K-5
23	Essex Elementary School	District	83.3	88.3	Continuous Improvement	Not Met	2	8	Below	224	K-5
24	Lawndale Elementary School	District	83.2	84	Continuous Improvement	Met	4	8	Below	210	K-5
25	Barber Elementary School	District	82.9	85.6	Continuous Improvement	Not Met	2	8	Below	223	K-5
26	Kenmore High School	District	82.7	86.2	Continuous Improvement	Not Met	2	12	--	834	9-12
27	North High School	District	81.7	85.6	Continuous Improvement	Not Met	0	12	--	774	9-12
28	Kent Middle School	District	81.5	77.5	Effective	Not Met	1	8	Above	685	6-8
29	Schumacher Academy Elementary School	District	81	81.1	Continuous	Not	2	8	Met	202	K-5

					Improvement	Met						
30	Mason Community Learning Center	District	80.8	75.3	Continuous Improvement	Not Met	1	8	Above		306	K-5
31	Voris Community Learning Center	District	80.7	86.4	Continuous Improvement	Met	1	8	Met		320	K-5
32	Akron Alternative Academy	District	80.5	84.7	Continuous Improvement	Not Met	3	12	--		292	9-12
33*	Life Skills Center Of Summit County	Charter	80.3	66.4	Continuous Improvement	Not Met	1	8	--		234	9-12
33*	East High School	District	80.3	77.9	Continuous Improvement	Met	0	12	--		857	9-12
35*	Bettes Elementary School	District	80.2	80.5	Continuous Improvement	Met	2	8	Below		230	K-5
35*	Pfeiffer Elementary School	District	80.2	80.1	Continuous Improvement	Met	3	8	Below		252	K-5
37*	Case Elementary School	District	80	85.3	Continuous Improvement	Not Met	1	8	Below		409	K-5
37*	Glover	District	80	83.9	Continuous Improvement	Not Met	1	8	Above		415	K-5
37*	Sam Salem Community Learning Center	District	80	78.3	Continuous Improvement	Met	1	8	Met		276	K-5
40	Edge Academy, The	Charter	79.4	85.1	Academic Watch	Not Met	0	10	Below		293	K-6
41	Innes Middle School	District	78.3	77.4	Continuous Improvement	Not Met	1	8	Above		697	6-8
42	Harris Elementary School	District	75.8	82.6	Academic Watch	Not Met	2	8	Below		435	K-5
43	Perkins Middle School	District	75.4	74	Academic Watch	Not Met	1	8	Met		461	6-8
44	Summit Academy Middle School-Akron	Charter	75.2	64.5	Continuous Improvement	Met	1	6	Above		43	6-9,UNG
45	Portage Path Elementary School	District	74.8	82.2	Academic Watch	Not Met	2	8	Met		256	K-5
46	Barrett Elementary School	District	74.6	71.2	Continuous Improvement	Met	1	8	Met		324	K-5
47	Life Skills Center Of Akron	Charter	74.1	44.8	Continuous Improvement	Not Met	0	12	--		237	9-12
48	Seiberling Elementary School	District	73.9	80.6	Academic Watch	Not Met	1	8	Met		457	K-5
49	Findley Elementary School	District	73.8	65	Continuous Improvement	Met	1	8	Above		377	K-5
50	Hill Elementary School	District	73.5	80.9	Academic Watch	Not Met	1	8	Below		334	K-5
51*	Buchtel High School	District	73.1	85.9	Academic Watch	Not Met	1	12	--		719	9-12
51*	Jennings Community Learning Center	District	73.1	76.1	Academic Watch	Not Met	1	8	Below		654	6-8
53	Crouse Elementary School	District	71.6	71.1	Academic Watch	Not Met	1	8	Below		265	K-5
54	Life Skills Center of North Akron	Charter	71.4	60	Academic Watch	Not Met	3	12	--		198	9-12
55	Rankin Elementary School	District	71.2	71	Academic Watch	Not Met	1	8	Above		234	K-5
56	Hope Academy University	Charter	70.7	70.3	Academic Watch	Not Met	1	15	Above		384	K-8
57	Helen Arnold Community Learning Center	District	70.5	72.1	Academic Watch	Not Met	1	8	Below		326	K-5

58	Goodyear Middle School	District	69.5	75.7	Academic Emergency	Not Met	0	8	Below	544	6-8
59	Lighthouse Comm & Prof Dev	Charter	65.9	78.3	Academic Emergency	Not Met	0	8	Below	103	K-5
60	Mcebright Elementary School	District	65.8	79	Academic Emergency	Not Met	1	8	Below	281	K-5
61	Summit Academy Community School for Alt Learners of Akron	Charter	63.9	65.2	Academic Emergency	Not Met	1	10	Below	109	K,1-8,UNG
62	Robinson Community Learning Center	District	62.8	74.1	Academic Emergency	Not Met	1	8	Below	298	K-5
63	Romig Road Community School	Charter	57.3	61	Academic Emergency	Not Met	1	10	Below	539	K-8
64	Akron Opportunity Center	District	55.7	51.4	Academic Emergency	Not Met	0	6	Below	88	6-8
65	Stewart Elementary School	District	54	71.4	Academic Emergency	Not Met	1	6	Met	62	K-5
66	Bridges Learning Center	District	51.3	59.9	Academic Emergency	Not Met	0	5	Below	110	K-8

Source: Ohio Department of Education

Notes: 1) Rankings are based on Performance Index score for the 2009-10 school year. 2) Schools without a Performance Index score were removed.

* These schools were tied for the same ranking number.