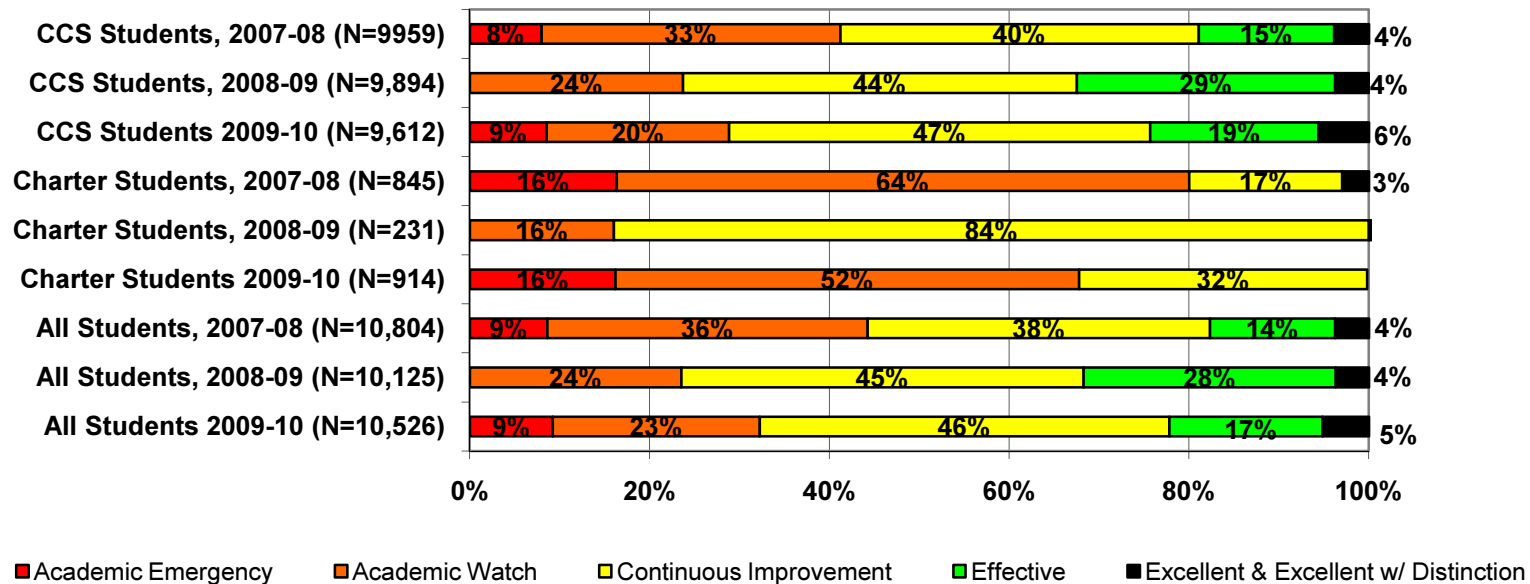




Detailed Analysis of School Performance in Canton (2009-10)

Graph I: Percent of Canton Students in Public Schools by State Designation (2007-08, 2008-09, and 2009-10)



Source: Ohio Department of Education interactive Local Report Card

Note: This chart does not include students in schools that are unrated and students attending charter e-schools.

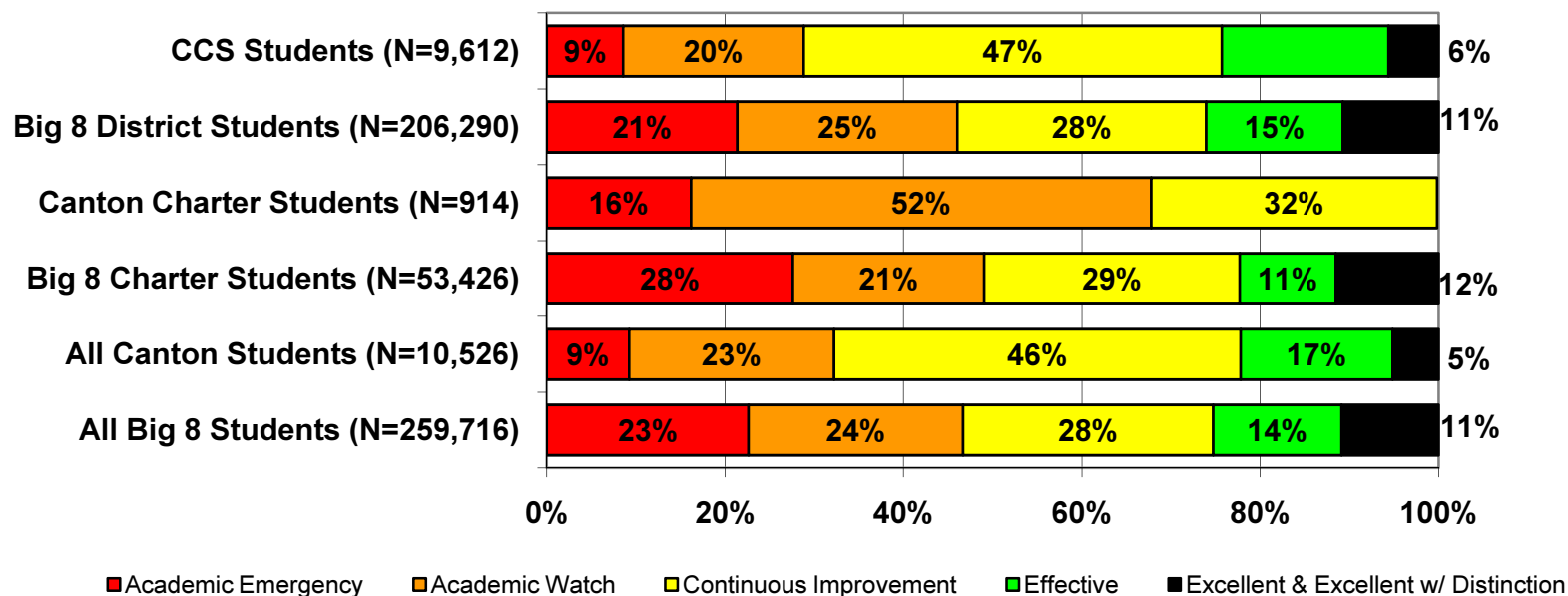
Percent of Canton Students in Public Schools (District and Charter) by State Designation.

Graph I shows the percent of Canton students in district and charter schools by state designation for the 2007-08, 2008-09, 2009-10 school years.

In 2009-10, 22 percent of public school students in Canton (district and charter) were attending schools the state rated Effective or Excellent (including Excellent with Distinction), down from 32 percent in 2008-09. The percent of Canton City School District

students in a D or F school increased from 2008-09 to 2009-10, from 24 percent to 29 percent. Data is available for far more charter students in Canton in 2009-10 (914 children) than in 2008-9 (just 231 children). This increase in numbers may have contributed to the decline in charter student performance. In 2009-10, 68 percent of Canton’s charter students attended an F or D rated school and this compares to only 16 percent of students receiving such ratings in 2008-9.

Graph II: Percent of Canton Students in Public Schools by State Designation versus the Big 8 Average*



Source: Ohio Department of Education interactive Local Report Card

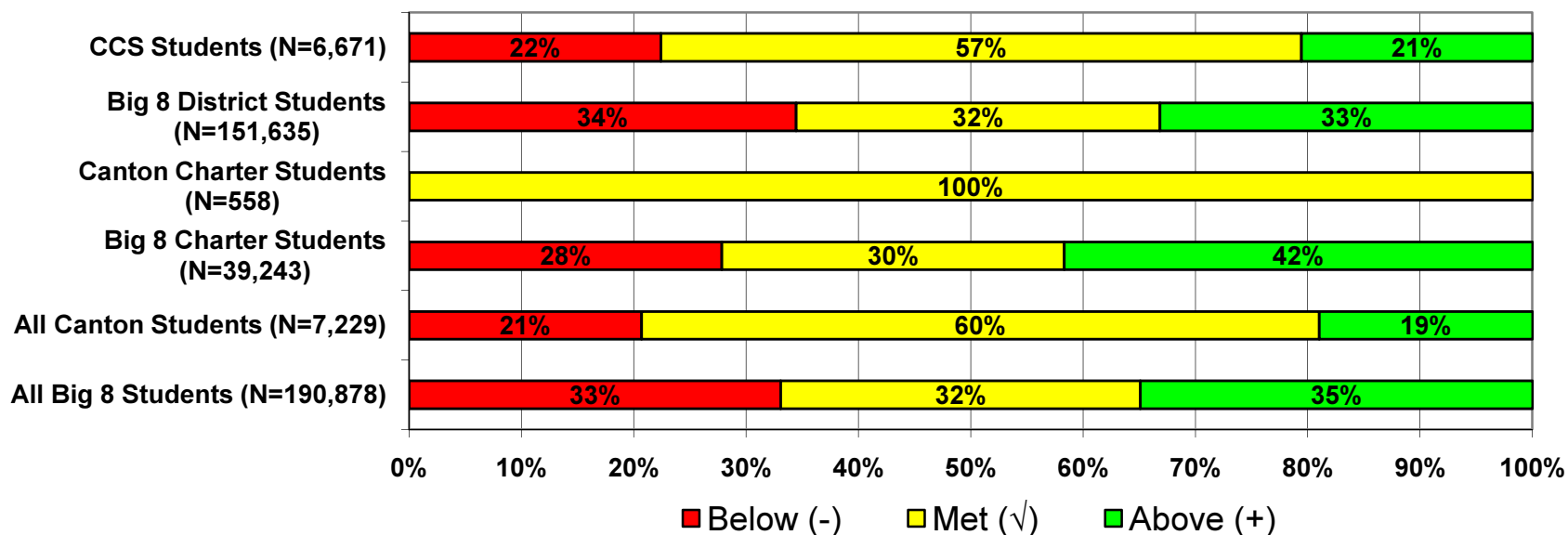
Note: This chart does not include students in schools that are unrated and students attending charter e-schools. Totals may not equal 100 due to rounding.

Percent of Canton Students in Public Schools by State Designation versus the Big 8 Average. Graph II shows how Canton district and charter school students performed against the Big 8 averages for district and charter performance. This helps to put the performance of students in Canton into a larger context (e.g., how do they perform against other urban students in Ohio?).

* The Big 8 districts are defined as Ohio’s largest urban districts: Akron, Canton, Cincinnati, Cleveland, Columbus, Dayton, Toledo, and Youngstown.

Public school students in Canton (both district and charter) were less likely to attend a D or F school than their Big 8 peers. In 2009-10, 32 percent of Canton students went to a school rated in Academic Emergency or Academic Watch, compared to nearly half (47 percent) of Big 8 students in similar schools.

Graph III: Percent of Canton Students in Public Schools by Value-added Composite Score versus the Big 8 Average (2009-10)



Source: Ohio Department of Education interactive Local Report Card

Note: This chart does not include students in schools that did not receive a value-added composite score or students attending charter e-schools.

Percent of Canton Students in Public Schools by Value-added Composite Score versus the Big 8 Average. Ohio’s local report cards include each school’s “value-added”—how much progress students in grades four through eight made in reading and math over the course of one year compared to how much the state expected them to gain (for a detailed explanation go to: http://www.edexcellence.net/detail/news.cfm?news_id=735&id=130) and for information on changes made to the calculations this year, go to: <http://edexcellence.net/gadfly/index.cfm?issue=591#a6341>). Using this information Ohio determines if each school made “Above Expected Growth,” “Expected Growth,” or “Below Expected Growth.”

Overall, students in charter and district schools in Canton are more likely than their peers in the Big 8 cities to attend a school that met or exceeded the state's annual growth expectation: 79 percent of Canton students attended such a school, compared to 67 percent of Big 8 students. All Canton charter students tested in grades 4-8 achieved a year of academic growth in 2009-10, while 78 percent of Canton district students were in schools that met or exceeded the state's annual growth expectation.

Table I: Canton Public Schools (District and Charter) Ranked by Performance Index Score

The following pages list Canton's public charter and district schools ranked by Performance Index (PI) score[†] for the 2009-10 school year. Numerous other performance indicators are also included, but the Performance Index score was selected for ranking the schools because it provides an overall indication of how well students perform on all tested subjects in grades 3 through 8 and the Ohio Graduation Test.

We strongly encourage readers to look closely at the number of standards met and the number of standards possible. A school with a large number of possible standards and possible standards met has gotten a large percentage of students to the state proficiency goals.

We also encourage readers to consider schools' value-added results. Where the Performance Index reflects student achievement at one point in time, value-added tells us how a school is doing at helping its students make progress from year to year. For more on value-added, see Fordham's value-added primer on our website: http://www.edexcellence.net/detail/news.cfm?news_id=735&id=130.

[†] The Performance Index score is calculated by multiplying the percentage of students that are untested, below basic/limited, basic, proficient, accelerated, or advanced by weights ranging from 0 for untested to 1.2 for advanced students. The totals are then summed up to obtain the school or district's PI score. PI scores range from 0 to 120, and the state has set the goal for all schools to achieve a PI score of 100 or better. For a complete description of how the Ohio Department of Education calculates the PI score see their website here: <http://www.ode.state.oh.us/GD/DocumentManagement/DocumentDownload.aspx?DocumentID=29878>.

Table I: Canton Public Schools (District and Charter) Ranked by Performance Index Score

Rank	Building Name	Type	PI Score 09-10	PI Score 08-09	Designation 09-10	Overall AYP 09-10	# of standards met 09-10	# of standards possible 09-10	Value-added Composite 09-10	Enrollment	Grade Span
1	Portage Collab Montessori Middle School	District	102	96.8	Excellent with Distinction	Met	11	13	Above	159	K-8
2	Mason Elementary School	District	99.4	96.7	Effective	Met	9	10	Met	255	K-6
3	Worley Elementary School	District	95.4	90.5	Excellent	Met	6	10	Above	382	K-6
4	Canton Arts Academy @ Summit	District	94.7	89.9	Effective	Met	10	15	Met	198	K-8
5	Harter Elementary School	District	92.1	88.7	Effective	Met	4	10	Met	511	K-6
6	McGregor Elementary School	District	90.5	88.9	Effective	Met	5	10	Met	347	K-6
7	McKinley High School	District	88.7	92.1	Continuous Improvement	Not Met	3	12	--	1608	9-12
8	Cedar Elementary School	District	85.2	83	Continuous Improvement	Not Met	2	10	Met	420	K-6
9	Clarendon Elementary School	District	83.4	86.1	Continuous Improvement	Not Met	1	10	Met	441	K-6
10	Crenshaw Middle School	District	83.2	82.1	Continuous Improvement	Not Met	1	6	Met	384	7-8
11*	Timken High School	District	82.2	81.3	Continuous Improvement	Not Met	1	12	--	1098	9-12
11*	Summit Academy Secondary - Canton	Charter	82.2	77	Continuous Improvement	Met	1	11	--	55	8-12, UNG
13	Lehman Middle School	District	82	77.2	Continuous Improvement	Not Met	1	6	Met	552	7-8
14	Barbara F Schreiber Elementary School	District	80.3	81.5	Effective	Not Met	2	10	Above	486	K-6
15	Dueber Elementary School	District	79.5	80.8	Academic Watch	Not Met	2	10	Below	300	K-6
16	Allen Elementary School	District	78.8	72.8	Academic Watch	Not Met	2	10	Above	346	K-6
17	Youtz Elementary School	District	78.2	78.7	Academic Watch	Not Met	1	10	Met	383	K-6
18	Fairmount Elementary School	District	78.1	81.9	Academic Watch	Not Met	1	10	Below	267	K-6
19	Belle Stone Elementary School	District	76.9	81.2	Academic Watch	Not Met	1	10	Below	350	K-6,P
20	Life Skills Center Canton	Charter	75	61.8	Continuous Improvement	Not Met	1	12	--	238	9-12
21	Canton City Digital Academy	Charter	74.1	68.9	Academic Watch	Not Met	2	15	Met	151	4-12
22	Hope Academy Canton Campus	Charter	73.8	68.5	Academic Watch	Not Met	1	15	Met	322	K-8
23	Gibbs Elementary School	District	70.9	71.8	Academic Watch	Not Met	1	10	Below	303	K-6,P
24	Hartford Middle School	District	69.4	71.8	Academic Emergency	Not Met	1	6	Below	275	7-8
25	Belden Elementary School	District	69.3	71.6	Academic Emergency	Not Met	1	10	Met	312	K-6

26	Project Rebuild Community School	Charter	58.6	86	Academic Emergency	Not Met	0	12	--	63	9-12
27	Summit Academy-Canton	Charter	57.8	59.4	Academic Emergency	Not Met	0	13	Met	85	K,1-9,UNG

Source: Ohio Department of Education

Notes: 1) Rankings are based on Performance Index score for the 2009-10 school year. 2) Schools without a Performance Index score were removed.

* These schools were tied for the same ranking number.