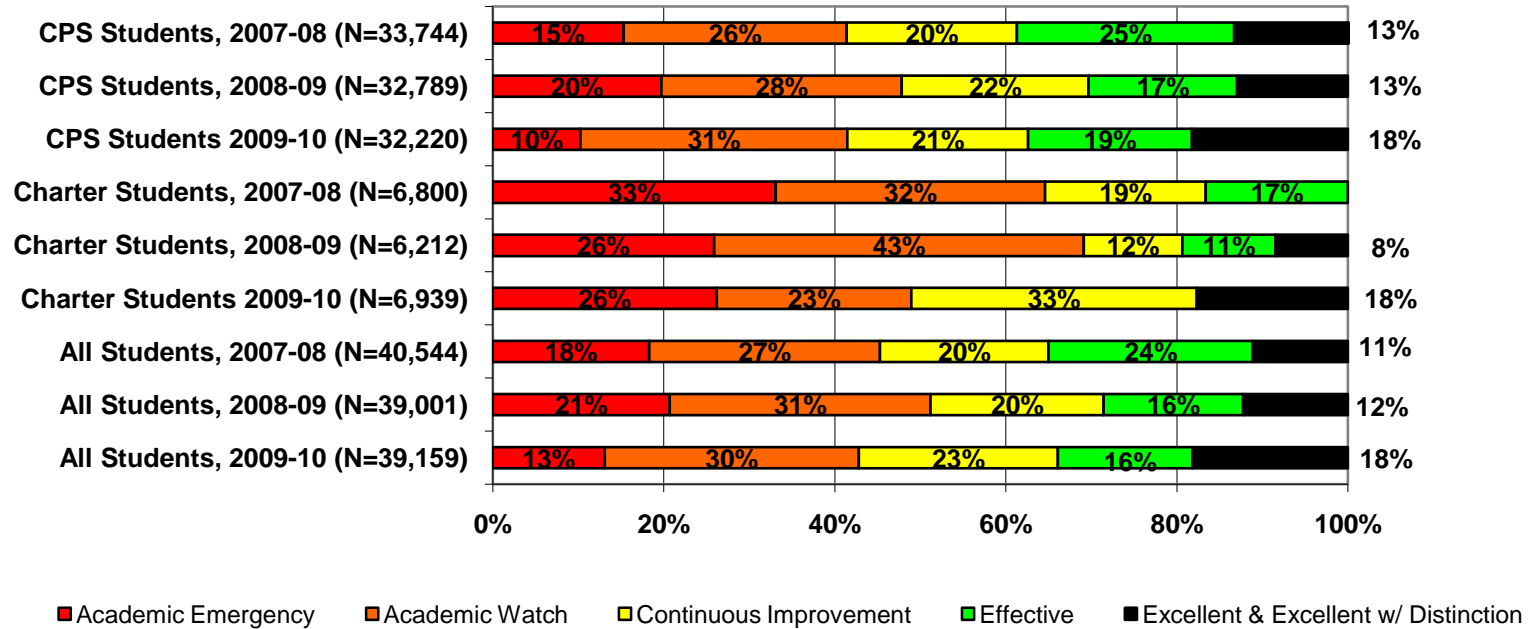




Detailed Analysis of School Performance in Cincinnati (2009-10)

Graph I: Percent of Cincinnati Students in Public Schools by State Designation (2007-08, 2008-09, and 2009-10)



Source: Ohio Department of Education interactive Local Report Card

Note: This chart does not include students in schools that are unrated and students attending charter e-schools.

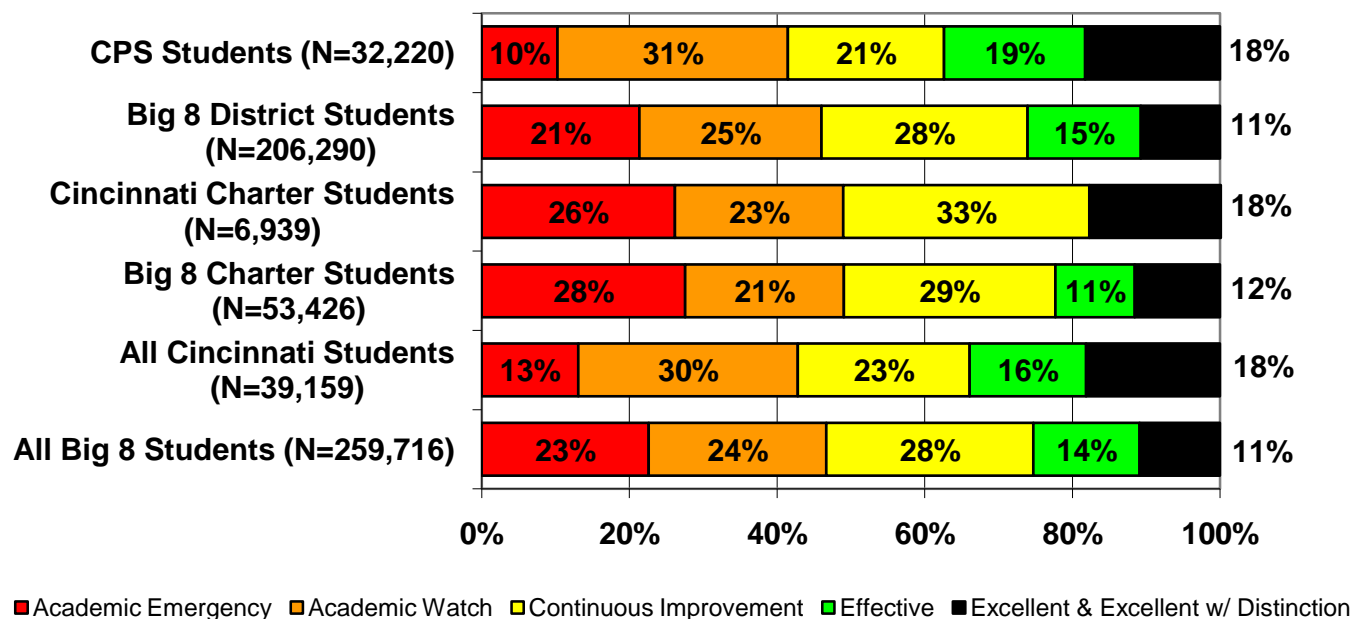
Percent of Cincinnati Students in Public Schools (District and Charter) by State Designation.

Graph I shows the percent of Cincinnati students in district and charter schools by state designation for the 2007-08, 2008-09, and 2009-10 school years.

In 2009-10, 13 percent of students (district and charter) were attending schools the state rated Academic Emergency while 30 percent were attending schools rated Academic Watch (for a total of 43 percent of students in D or F schools). The number of students in F schools fell from 21 percent in 2008-09 to just 13 percent this year. The district led the improvement with just 10 percent of district students in an F school in 2009-10, which is in contrast to 20 percent in the lowest rated category in 2008-09.

The percent of students (district and charter) attending schools rated Excellent (including Excellent with Distinction) rose from 12 percent in 2008-09 to 18 percent in 2009-10. Both the district and the charters saw more of their students in top rated schools in 2009-10 than 2008-09.

Graph II: Percent of Cincinnati Students in Public Schools by State Designation versus the Big 8 Average*



Source: Ohio Department of Education interactive Local Report Card

Note: This chart does not include students in schools that are unrated and students attending charter e-schools. Totals may not equal 100 due to rounding.

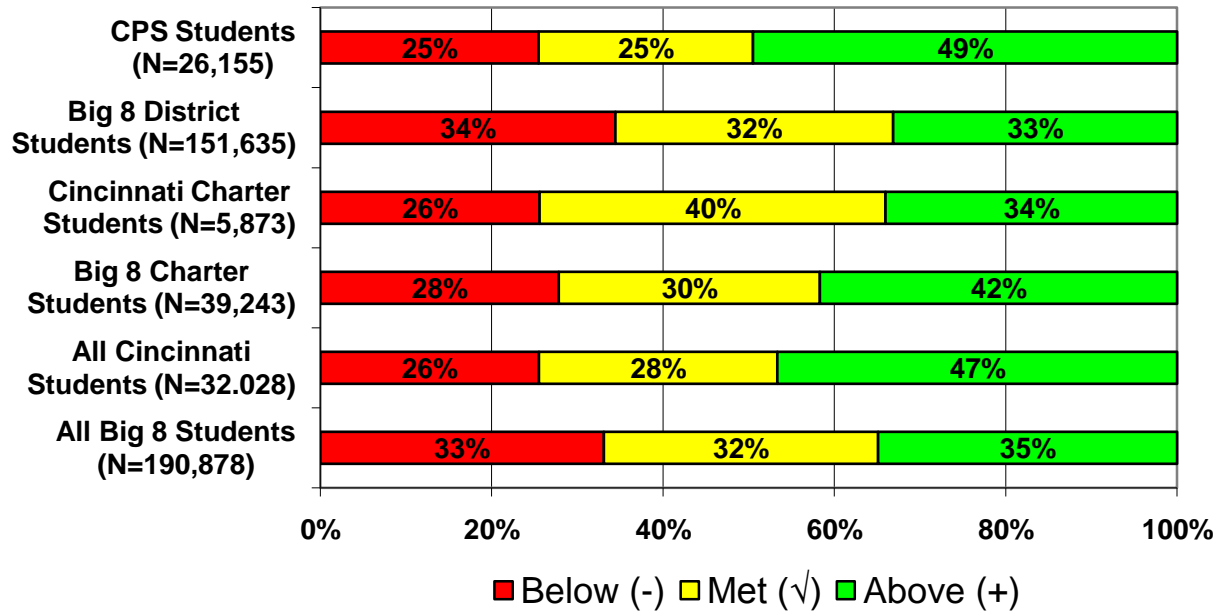
* The Big 8 districts are defined as Ohio’s largest urban districts: Akron, Canton, Cincinnati, Cleveland, Columbus, Dayton, Toledo, and Youngstown.

Percent of Cincinnati Students in Public Schools by State Designation versus the Big 8 Average.

Graph II shows how Cincinnati district and charter school students performed against the Big 8 averages for district and charter performance. This helps to put the performance of students in Cincinnati into a larger context (e.g., how do they perform against other urban students in Ohio?).

Cincinnati Public School District students are more likely than their Big 8 District peers to attend schools rated A or B by the state. More than one-third (37 percent) of Cincinnati Public School District students are in a school rated Effective or Excellent (including Excellent with Distinction), versus 26 percent of students in the Big 8 districts. Only 10 percent of Cincinnati district students attended a school rated Academic Emergency (F) while 26 percent of Cincinnati charter students attended schools with the lowest academic rating.

Graph III: Percent of Cincinnati Students in Public Schools by Value-added Composite Score versus the Big 8 Average (2009-10)



Source: Ohio Department of Education interactive Local Report Card

Note: This chart does not include students in schools that did not receive a value-added composite score or students attending charter e-schools.

Percent of Cincinnati Students in Public Schools by Value-added Composite Score versus the Big 8 Average. Ohio’s local report cards include each school’s “value-added”—how much progress students in grades four through eight made in reading and math over the course of one year compared to how much the state expected them to gain (for a detailed explanation go to: http://www.edexcellence.net/detail/news.cfm?news_id=735&id=130, and for information on changes made to the calculations this year, go to: <http://edexcellence.net/gadfly/index.cfm?issue=591#a6341>). Using this information Ohio determines if each school made “Above Expected Growth,” “Expected Growth,” or “Below Expected Growth.”

Cincinnati’s students were more apt to attend a school that achieved more than a year’s worth of growth (47 percent) than their Big 8 peers (35 percent). Cincinnati district schools outperformed their Big 8 peers in value-added: just 25 percent of Cincinnati district students attended a school that failed to meet state growth expectations, compared with 33 percent of all Big 8 district students.

Table I: Cincinnati Public Schools (District and Charter) Ranked by Performance Index Score

The following pages list Cincinnati’s public charter and district schools ranked by Performance Index (PI) score[†] for the 2009-10 school year. Numerous other performance indicators are also included, but the Performance Index score was selected for ranking the schools because it provides an overall indication of how well students perform on all tested subjects in grades 3 through 8 and the Ohio Graduation Test.

We strongly encourage readers to look closely at the number of standards met and the number of standards possible. A school with a large number of possible standards and possible standards met has gotten a large percentage of students to the state proficiency goals.

We also encourage readers to consider schools’ value-added results. Where the Performance Index reflects student achievement at one point in time, value-added tells us how a school is doing at helping its students make progress from year to year. For more on value-added, see Fordham’s value-added primer on our website: http://www.edexcellence.net/detail/news.cfm?news_id=735&id=130.

A note on Fordham sponsored schools

In 2009-10, the Thomas B. Fordham Foundation sponsored six schools. One was rated Effective (B), four were rated Continuous Improvement (C) and one was rated Academic Emergency (F). In Cincinnati, the Thomas B. Fordham Foundation serves as sponsor for Phoenix Community Learning Center.

[†] The Performance Index score is calculated by multiplying the percentage of students that are untested, below basic/limited, basic, proficient, accelerated, or advanced by weights ranging from 0 for untested to 1.2 for advanced students. The totals are then summed up to obtain the school or district’s PI score. PI scores range from 0 to 120, and the state has set the goal for all schools to achieve a PI score of 100 or better. For a complete description of how the Ohio Department of Education calculates the PI score see their website here: <http://www.ode.state.oh.us/GD/DocumentManagement/DocumentDownload.aspx?DocumentID=29878>.

Table I: Cincinnati Public Schools (District and Charter) Ranked by Performance Index Score

Rank	Building Name	Type	PI Score 09-10	PI Score 08-09	Designation 09-10	Overall AYP 09-10	# of standards met 09-10	# of standards possible 09-10	Value-added Composite 09-10	Enrollment	Grade Span
1	Walnut Hills High School	District	110.7	109.5	Excellent	Met	17	17	Above	491	7-12
2	Schiel Prim Schl Arts Enrchrmt Elementary School	District	105.9	107.2	Excellent	Met	3	3	--	558	K-3
3	Kilgour Elementary School	District	104	106.5	Excellent	Not Met	10	10	Below	744	K-6
4	T.C.P. World Academy	Charter	102.9	104.8	Excellent	Met	10	10	Below	--	K-6
5	Fairview-Clifton German Language School	District	101.6	100.9	Excellent	Met	10	10	Below	390	K-6,P
6	Covedale Elementary School	District	100.8	98.1	Excellent	Met	8	10	Above	675	K-6
7	Cincinnati College Preparatory Academy	Charter	100.2	99.6	Excellent	Met	24	25	Met	315	K-12
8	Robert A. Taft Information Technology High School	District	99.1	97.5	Excellent	Met	12	12	--	597	9-12
9	School For Creat & Perf Arts High School	District	98	93.4	Effective	Not Met	19	24	Met	689	4-12
10	Clark Montessori High School	District	97.5	95.3	Effective	Met	14	17	Met	503	7-12
11	Sands Montessori Elementary School	District	96.6	97.3	Effective	Not Met	8	10	Met	532	K-6,P
12	King Academy Community School	Charter	94.4	93.3	Excellent	Met	9	13	Above	666	K-8
13*	Aiken College and Career High School	District	93.8	87.9	Effective	Met	9	12	--	411	9-12
13*	Hartwell Elementary School	District	93.8	88.7	Excellent	Met	8	15	Above	683	P,K-8
15	Dater Montessori Elementary School	District	93.6	94.7	Effective	Met	5	10	Below	413	K-6,P
16	North Avondale Montessori Elementary School	District	91.1	93.5	Effective	Not Met	4	10	Below	396	K-6,P
17	Western Hills University High School	District	90.4	89.1	Effective	Met	9	12	--	796	9-12
18	College Hill Fundamental Academy	District	90.2	90.3	Excellent	Not Met	3	10	Above	413	K-6,P
19	Withrow University High School	District	89.3	95	Continuous Improvement	Not Met	8	12	--	417	9-12
20	Winton Montessori Elementary School	District	87.6	80.9	Effective	Met	3	10	Above	651	K-6,P
21	Gilbert A. Dater High School	District	87.4	87.8	Academic Watch	Not Met	11	17	Below	281	7-12
22	Hamilton Cnty Math & Science	Charter	87	82.9	Continuous Improvement	Met	7	15	Met	253	K-8
23	Winton Hills Academy Elementary School	District	85.6	78.6	Continuous Improvement	Met	5	15	Below	415	P,K-8
24	James N. Gamble Montessori High School	District	85.3	87.7	Continuous Improvement	Not Met	9	16	Below	614	7-10
25	Woodford Paideia Elementary School	District	85.1	85.3	Effective	Not Met	4	10	Above	608	K-6,P
26	George Washington Carver Preparatory Academy	Charter	84.1	81.3	Continuous Improvement	Not Met	4	8	Above	711	K-8
27	Mt. Washington Elementary School	District	83.1	89.8	Continuous Improvement	Not Met	4	15	Below	521	P,K-8
28	Hoffman-Parham Elementary School	District	82.3	77.8	Effective	Met	5	15	Above	482	P,K-8
29	Phoenix Community Learning Ctr	Charter	82.2	71.8	Continuous Improvement	Met	4	15	Above	700	K-8
30	Orion Academy	Charter	82	75	Continuous Improvement	Met	1	15	Above	711	K-8

31*	Shroder Paideia High School	District	81	82.6	Continuous Improvement	Not Met	8	17	Below	524	7-12
31*	Mt. Healthy Preparatory and Fitness Academy	Charter	81	77.5	Continuous Improvement	Met	5	15	Above	338	K,1-8,SN
33	Bond Hill Academy Elementary School	District	80.8	73.5	Continuous Improvement	Not Met	3	15	Above	655	P,K-8
34	Toledo Preparatory and Fitness Academy	Charter	79.7	85.4	Academic Watch	Not Met	2	5	Below	459	K-8
*35	Sayler Park Elementary School	District	79	83.8	Continuous Improvement	Met	6	15	Met	455	P,K-8
*35	Western Hills Engineering High School	District	79	77.8	Academic Watch	Not Met	1	12	--	676	9-12
37	Silverton Paideia Elementary School	District	78.6	78.5	Continuous Improvement	Not Met	2	10	Above	390	K-6,P
38	Academy for Multilingual Immersion Studies	District	78.4	77.9	Academic Watch	Not Met	1	15	Below	568	P,K-8
39	Oyler School	District	77.2	72.7	Continuous Improvement	Not Met	1	26	Above	461	K-12,P
40	Roselawn Condon Elementary School	District	76.7	77.1	Academic Watch	Not Met	1	15	Met	336	P,K-8
41	Withrow International High School	District	75.9	84.6	Academic Watch	Not Met	3	12	--	643	9-12
*42	Cheviot Elementary School	District	75.1	76.2	Academic Watch	Not Met	1	15	Met	290	P,K-8
*42	Hughes Center High School	District	75.1	82.3	Academic Watch	Not Met	3	12	--	461	10-12
44	Horizon Science Academy-Cincinnati	Charter	75	78.7	Academic Watch	Not Met	7	25	Below	1037	K-12
45	Academy Of World Languages Elementary School	District	74.9	72.2	Academic Watch	Not Met	1	15	Above	694	P,K-8
46	Midway Elementary School	District	74.4	73.1	Academic Watch	Not Met	1	15	Met	382	P,K-8
47	Woodward Career Technical High School	District	74	73.6	Academic Watch	Not Met	1	12	--	627	9-12
48	Riverview East Academy	District	73.6	76.3	Academic Watch	Not Met	4	26	Met	268	K-12,P
49	Rockdale Academy Elementary School	District	73.2	62.6	Continuous Improvement	Met	1	15	Above	2212	P,K-8
50*	Alliance Academy of Cincinnati	Charter	73	67.6	Continuous Improvement	Met	3	15	Above	522	K-8
50*	Summit Academy Transition High School-Cincinnati	Charter	73	62.5	Academic Watch	Not Met	2	9	--	633	7-12,UNG
52	Cincinnati Leadership Academy	Charter	72.8	77.3	Academic Watch	Not Met	1	10	Below	335	K-8
53	Roll Hill School	District	72.5	66	Continuous Improvement	Met	1	15	Above	238	P,K-8
54*	Carson Elementary School	District	71.6	73	Academic Watch	Not Met	1	15	Met	473	P,K-8
54*	Life Skills Center Of Hamilton County	Charter	71.6	67.2	Continuous Improvement	Not Met	0	7	--	391	9-12
56	Mount Auburn International Academy	Charter	71.5	67.4	Academic Watch	Not Met	0	20	Met	581	K-12
57	Westwood Elementary School	District	71.4	75	Academic Watch	Not Met	1	15	Below	750	P,K-8
58	John P Parker Elementary School	District	71.3	70.3	Academic Watch	Not Met	1	15	Met	466	P,K-8
59	Pleasant Hill Elementary School	District	71	69	Academic Watch	Not	1	15	Above	1000	P,K-8

						Met						
60	Roberts Academy: A Paideia Learning Community	District	70.7	72.6	Academic Watch	Not Met	1	15	Met		395	P,K-8
61	Ethel M. Taylor Academy	District	69.7	61.2	Continuous Improvement	Met	1	15	Above		678	K-8
62	Frederick Douglass Elementary School	District	68.8	62.7	Continuous Improvement	Met	1	15	Above		169	P,K-8
*63	Chase Elementary School	District	68	58.2	Academic Emergency	Not Met	1	15	Above		156	P,K-8
*63	Rothenberg Preparatory Academy	District	66.9	50	Continuous Improvement	Met	1	15	Above		105	P,K-8
65	Riverside Academy	Charter	65.6	78	Academic Emergency	Not Met	0	20	Below		109	K-12
66	Life Skills Ctr Of Cincinnati	Charter	64.8	60.7	Academic Watch	Not Met	0	12	--		118	9-12
67	Pleasant Ridge Montessori School	District	64.6	65.8	Academic Watch	Not Met	1	10	Above		397	P,K-8
68	W.E.B. Dubois	Charter	64.3	52.6	Academic Emergency	Not Met	0	15	Above		350	4-8
69	Mt. Airy Elementary School	District	63.8	63.3	Academic Emergency	Not Met	1	15	Above		141	P,K-8
70	William H Taft Elementary School	District	62.6	53.4	Continuous Improvement	Met	1	15	Above		293	P,K-8
71*	South Avondale Elementary School	District	62.5	54	Academic Emergency	Not Met	1	15	Above		344	P,K-8
71*	V L T Academy	Charter	62.5	61.8	Academic Emergency	Not Met	1	25	Met		63	K-12
73	Rees E. Price Elementary School	District	62.1	66.2	Academic Emergency	Not Met	1	15	Below		571	P,K-8
74	Quebec Heights Elementary School	District	62	62.6	Academic Emergency	Not Met	1	15	Above		195	P,K-8
75*	George Hays-Jennie Porter Elementary	District	60.8	54.4	Academic Emergency	Not Met	1	15	Above		531	P,K-8
75*	Summit Academy Cincinnati	Charter	60.8	55.9	Academic Emergency	Not Met	1	8	Met		279	1-8,UNG
77	Virtual High School	District	55.7	73.4	Academic Emergency	Not Met	1	12	--		385	9-12
78	P.A.C.E. High School	Charter	54.6	46.4	Academic Emergency	Not Met	0	12	--		476	9-12
79	East End Comm Heritage School	Charter	53.4	42.8	Not Rated	Not Met	0	2	--		79	K-12
80	Dohn Community	Charter	45.8	49.7	Academic Emergency	Not Met	0	12	--		408	9-12
81	Lighthouse Community Sch Inc	Charter	45.2	27.5	Not Rated	Not Met	0	2	--		101	6-12

Source: Ohio Department of Education

Notes: 1) Rankings are based on Performance Index score for the 2009-10 school year. 2) Schools without a Performance Index score were removed.

* These schools were tied for the same ranking number.