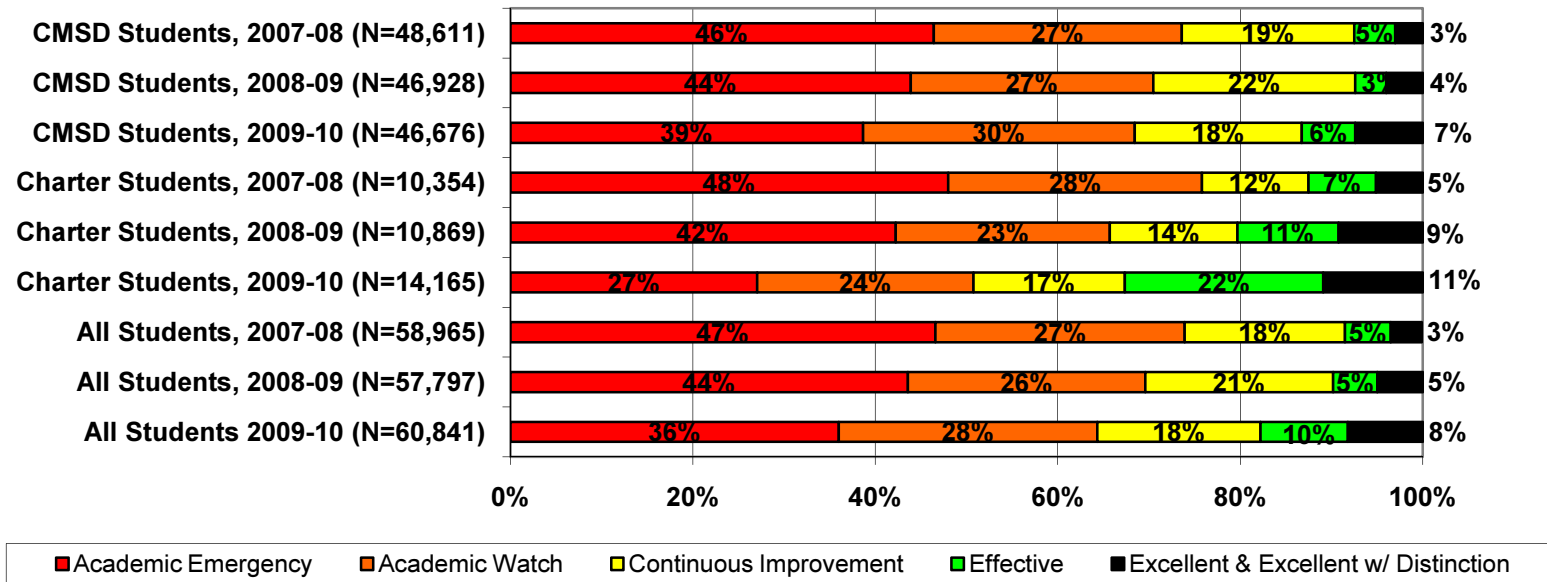




## Detailed Analysis of School Performance in Cleveland (2009-10)

*Graph I: Percent of Cleveland Students in Public Schools by State Designation (2007-08, 2008-09, and 2009-10)*



Source: Ohio Department of Education interactive Local Report Card

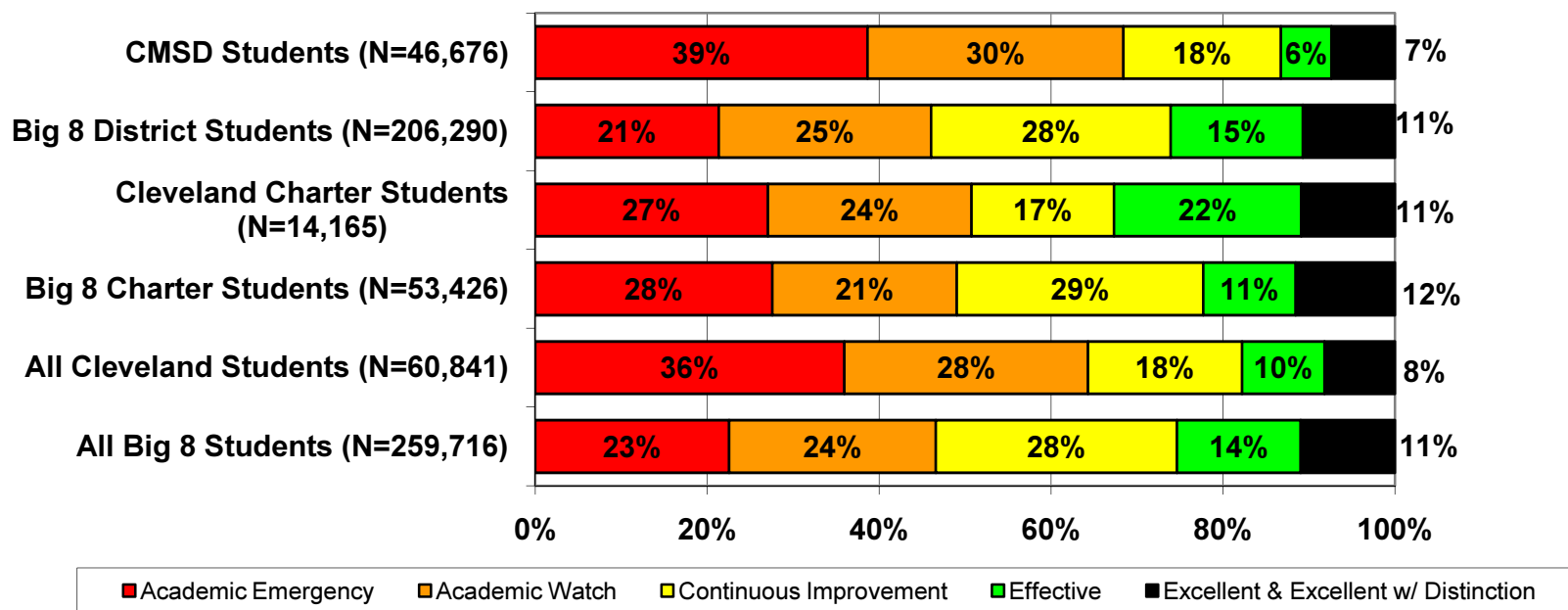
Note: This chart does not include students in schools that are unrated and students attending charter e-schools.

### **Percent of Cleveland Students in Public Schools (District and Charter) by State Designation.**

Graph I shows the percent of Cleveland students in district and charter schools by state designation for the 2007-08, 2008-09, and 2009-10 school years.

The percent of Cleveland students (district and charter) attending schools rated D or F by the state fell from 70 percent in 2008-09 to 64 percent in 2009-10. Cleveland charter school students were significantly more likely to attend a school rated Effective or Excellent (including Excellent with Distinction) than their district counterparts. Thirty-three percent of charter school students went to an A or B rated school, versus just 13 percent of Cleveland Metropolitan School District students.

**Graph II: Percent of Cleveland Students in Public Schools by State Designation versus the Big 8 Average\***



Source: Ohio Department of Education interactive Local Report Card

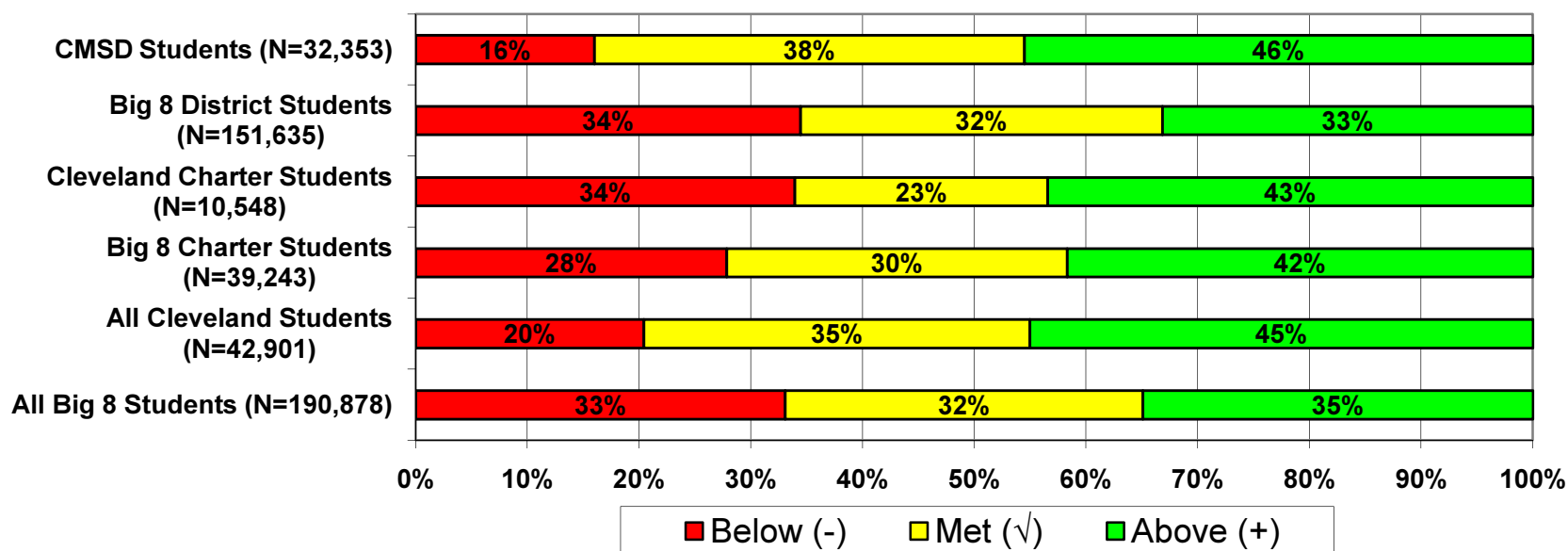
Note: This chart does not include students in schools that are unrated and students attending charter e-schools.

**Percent of Cleveland Students in Public Schools by State Designation versus the Big 8 Average.** Graph II shows how Cleveland district and charter school students performed against the Big 8 averages for district and charter performance. This helps to put the performance of students in Cleveland into a larger context (e.g., how do they perform against other urban students in Ohio?)

\* The Big 8 districts are defined as Ohio’s largest urban districts: Akron, Canton, Cincinnati, Cleveland, Columbus, Dayton, Toledo, and Youngstown.

Cleveland Metropolitan School District students were far more likely to attend a school rated D or F by the state, as compared to their Big 8 District peers. Sixty-nine percent of Cleveland Metropolitan School District students went to a school in Academic Emergency or Academic Watch, while under one half (46 percent) of Big 8 District students went to similar schools. Charter school students in Cleveland are more likely than both their district peers and Big 8 charter school peers to attend a school that is Effective or Excellent (including Excellent with Distinction). Thirty-three percent of charter students in Cleveland attend a school ranked A or B, compared to 23 percent of charter students in the Big 8 districts, and only 13 percent of Cleveland Metropolitan School District students.

**Graph III: Percent of Cleveland Students in Public Schools by Value-added Composite Score versus the Big 8 Average (2009-10)**



Source: Ohio Department of Education interactive Local Report Card

Note: This chart does not include students in schools that did not receive a value-added composite score or students attending charter e-schools.

**Percent of Cleveland Students in Public Schools by Value-added Composite Score versus the Big 8 Average.** Ohio’s local report cards include each school’s “value-added”—how much progress students in grades four through eight made in reading and math over the course of one year compared to how much the state expected them to gain (for a detailed explanation go to:

[http://www.edexcellence.net/detail/news.cfm?news\\_id=735&id=130](http://www.edexcellence.net/detail/news.cfm?news_id=735&id=130), and for information on changes made to the calculations this year, go

to: <http://edexcellence.net/gadfly/index.cfm?issue=591#a6341>). Using this information Ohio determines if each school made “Above Expected Growth,” “Expected Growth,” or “Below Expected Growth.”

Students in public schools in Cleveland (district and charter) are more likely than their Big 8 peers to attend a school that met or exceeded the state’s growth expectations (80 percent of Cleveland students versus 67 percent of Big 8 students). More than 84 percent of students in Cleveland Metropolitan School District attend a school that achieved at least one year of academic growth last year, outpacing the Big 8 districts (at 65 percent) and Cleveland charter schools (at 66 percent).

***Table I: Cleveland Public Schools (District and Charter) Ranked by Performance Index Score***

The following pages list Cleveland’s public charter and district schools ranked by Performance Index (PI) score<sup>†</sup> for the 2009-10 school year. Numerous other performance indicators are also included, but the Performance Index score was selected for ranking the schools because it provides an overall indication of how well students perform on all tested subjects in grades 3 through 8 and the Ohio Graduation Test. In the city of Cleveland, six of the top ten highest achieving schools were charter schools last year.

We strongly encourage readers to look closely at the number of standards met and the number of standards possible. A school with a large number of possible standards and possible standards met has gotten a large percentage of students to the state proficiency goals.

We also encourage readers to consider schools’ value-added results. Where the Performance Index reflects student achievement at one point in time, value-added tells us how a school is doing at helping its students make progress from year to year. For more on value-added, see Fordham’s value-added primer on our website: [http://www.edexcellence.net/detail/news.cfm?news\\_id=735&id=130](http://www.edexcellence.net/detail/news.cfm?news_id=735&id=130).

---

<sup>†</sup> The Performance Index score is calculated by multiplying the percentage of students that are untested, below basic/limited, basic, proficient, accelerated, or advanced by weights ranging from 0 for untested to 1.2 for advanced students. The totals are then summed up to obtain the school or district’s PI score. PI scores range from 0 to 120, and the state has set the goal for all schools to achieve a PI score of 100 or better. For a complete description of how the Ohio Department of Education calculates the PI score see their website here: <http://www.ode.state.oh.us/GD/DocumentManagement/DocumentDownload.aspx?DocumentID=29878>.

**Table I: Cleveland Public Schools (District and Charter) Ranked by Performance Index Score**

Rank	Building Name	Type	PI Score 09-10	PI Score 08-09	Designation 09-10	Overall AYP 09-10	# of standards met 09-10	# of standards possible 09-10	Value-added Composite 09-10	Enrollment	Grade Span
1	Constellation Schools: Outreach Academy for Students with Di	Charter	116.8	117.2	Excellent	Met	6	6	--	47	K-12
2	Marcus Garvey Academy	Charter	106.4	72.6	Excellent	Met	15	15	Above	179	K-9
3*	John Hay School of Science & Medicine	District	106.3	0	Excellent	Met	11	11	--	351	9-12
3*	Valley View Elementary School	District	106.3	107.2	Excellent	Met	4	5	Below	133	K-4,P
5	Constellation Schools: Old Brooklyn Community Elementary	Charter	104.7	102	Excellent	Met	5	5	Below	272	K-4
6	John Hay Early College High School	District	104	106.2	Excellent	Met	7	7	--	235	9-12
7	Citizens Academy	Charter	102.9	100.1	Excellent	Met	8	8	Met	395	K-8
8	John Hay School of Architecture & Design	District	101.6	0	Excellent	Met	10	11	--	271	9-12
9	Noble Academy-Cleveland	Charter	100.8	95.9	Excellent with Distinction	Met	10	12	Above	220	K-12
10	Intergenerational School, The	Charter	100.3	102.9	Excellent	Met	11	12	Met	220	K-8
11	Constellation Schools: Old Brooklyn Community Middle	Charter	99.9	95.7	Excellent	Met	10	11	Above	152	5-9
12*	Constellation Schools: Puritas Community Elementary	Charter	99.8	99.4	Effective	Met	4	5	Met	195	K-8
12*	Whitney Young School	District	99.8	100.2	Excellent with Distinction	Met	18	19	Above	339	6-12
14	Cleveland School Of The Arts High School	District	99.3	97.4	Excellent	Met	15	19	Above	595	7-12
15	MC^2 STEM High School	District	97.7	0	Effective	Met	5	6	--	152	9-10
16	Louisa May Alcott Elementary School	District	96.8	95.1	Effective	Not Met	7	8	Met	226	K-5
17	Douglas MacArthur	District	96.5	92.7	Effective	Met	3	5	Above	173	K-4,P
18	Riverside School	District	96	97.7	Effective	Not Met	11	15	Met	521	K-8
19	Constellation Schools: Parma Community	Charter	95.7	93.9	Effective	Met	18	25	Above	760	K-12
20*	Constellation Schools: Westpark Community Elementary	Charter	95.4	98.2	Effective	Met	4	5	Met	293	K-4
20*	Horizon Science Acad Cleveland	Charter	95.4	95.4	Effective	Met	11	12	--	453	6-12
22	Garfield Elementary School	District	93.8	0	Effective	Not Met	8	15	Below	375	K-8
23	Washington Park Community	Charter	93.1	90.4	Effective	Met	11	15	Above	249	K-8
24	Newton D Baker School	District	91.8	87	Effective	Not Met	9	15	Above	441	P,K-8
25	Benjamin Franklin	District	91.6	87.6	Excellent	Met	10	15	Above	640	P,K-8
26	William C Bryant Elementary School	District	91.4	86.4	Excellent	Met	8	15	Above	423	P,K-8
27	Constellation Schools: Westside Community School of the Arts	Charter	91.1	92	Effective	Met	4	8	Met	169	K-9
28	Horizon Science Academy-Cleveland Middle School	Charter	90.4	88.1	Effective	Met	3	8	Below	147	K-8
29	Cleveland Entrepreneurship Preparatory School	Charter	90.3	98.1	Effective	Met	7	8	--	295	
30*	Phoenix Village Academy Primary 2	Charter	90.2	96.7	Excellent	Not Met	4	8	Above	58	K-12
30*	Tremont Montessori School	District	90.2	85	Excellent	Not Met	4	15	Above	463	P,K-8
32	Early Childhood Development	District	89.2	98.4	Continuous Improvement	Not Met	1	3	--	143	K-3,P
33	Constellation Schools: Madison Community Elementary	Charter	88.7	88.9	Continuous Improvement	Met	6	15	Above	264	K-8

34	Garrett Morgan Schl Of Science School	District	88.6	91.4	Continuous Improvement	Not Met	6	12	--	247	9-12
35	James Ford Rhodes High School	District	88.1	86	Continuous Improvement	Not Met	6	12	--	1230	9-12
36*	New Day Academy Boarding & Day School	Charter	87.4	66.4	Continuous Improvement	Met	8	13	Above	143	K-12
36*	SuccessTech Academy School	District	87.4	84.8	Continuous Improvement	Not Met	4	12	--	241	9-12
38	Cleveland School of Arts (Dike Campus)	District	87.2	86.7	Continuous Improvement	Met	5	10	Met	380	K-6,P
39	Design Lab	District	87.1	0	Continuous Improvement	Not Met	2	6	--	131	9-10
40	Lakewood City Academy	Charter	86.6	85.9	Continuous Improvement	Not Met	8	17	Met	161	K-12
41	Warner Girls Leadership Academy	District	86.4	94.1	Continuous Improvement	Met	1	5	Below	242	K-4,P
42	Clara E Westropp School	District	85.7	79.8	Continuous Improvement	Not Met	3	15	Above	547	P,K-8
43	Constellation Schools: Westpark Community Middle	Charter	85.2	85.4	Effective	Met	5	11	Above	147	5-9
44	Hope Academy Lincoln Park	Charter	85	74.7	Effective	Met	6	10	Above	167	K-8
45	Orchard School	District	84.2	79.3	Effective	Met	4	15	Above	344	P,K-8
46	Constellation Schools: Puritas Community Middle	Charter	83.7	78.1	Continuous Improvement	Met	3	11	Above	112	5-9
47	Health Careers Center High School	District	83.3	0	Continuous Improvement	Not Met	3	11	--	254	9-12
48	Watterson-Lake School	District	83.1	80.6	Effective	Met	3	15	Above	500	K-8
49	Max S Hayes High School	District	82.9	83.7	Continuous Improvement	Not Met	3	12	--	506	9-12
50	Kenneth W Clement	District	82.5	85.1	Continuous Improvement	Not Met	1	5	Below	166	K-4,P
51	Jane Addams Business Careers High School	District	82.4	88.7	Continuous Improvement	Not Met	3	12	--	387	9-12
52	Louis Agassiz School	District	82.3	83.5	Continuous Improvement	Not Met	3	15	Above	351	K-8
53	Marion C Seltzer Elementary School	District	81.8	80.9	Continuous Improvement	Not Met	2	15	Below	585	K-8
54	Ginn Academy	District	80.5	80.4	Continuous Improvement	Not Met	2	11	--	272	9-12
55	Oliver H Perry Elementary School	District	80.3	82.1	Continuous Improvement	Not Met	3	15	Met	406	P,K-8
56	Cleveland Arts and Social Sciences Academy	Charter	80.2	65.6	Effective	Met	2	12	Above	208	K-12
57	Robinson G Jones Elementary School	District	78.8	74.6	Continuous Improvement	Met	4	15	Above	369	P,K-8
58	Wilbur Wright School	District	78.5	70.5	Academic Watch	Not Met	1	15	Above	596	P,K-8
59*	Horizon Science Academy Cleveland Elementary School	Charter	78.3	79.7	Continuous Improvement	Met	3	8	Below	147	K-5
59*	Horizon Science Academy-Denison Middle School	Charter	78.3	76.4	Continuous Improvement	Met	2	15	Above	322	K-12
59*	Denison	District	78.3	76.4	Academic Watch	Not Met	3	15	Met	708	K-8
59*	John Marshall High School	District	78.3	83.3	Academic Watch	Not Met	3	12	--	1519	9-12
63	Captain Arthur Roth	District	77.9	71.3	Academic Watch	Not Met	1	15	Met	259	P,K-8
64	Buhrer	District	77.8	69.2	Continuous Improvement	Met	2	15	Above	333	P,K-8

65	Hope Academy Northcoast	Charter	77.2	75.1	Continuous Improvement	Not Met	3	15	Above	278	K-8
66	Almira	District	77.1	71.4	Continuous Improvement	Not Met	0	15	Above	374	K-8
67	Life Skills Center of Columbus Southeast	Charter	77	72.9	Continuous Improvement	Not Met	3	12	--	309	9-12, UNG
68	Waverly Elementary School	District	76.9	73.3	Academic Watch	Not Met	3	15	Met	430	K-8
69	Clark School	District	76.5	72.8	Continuous Improvement	Met	4	15	Above	584	K-8
70	Collinwood High School	District	76.1	77.4	Academic Watch	Not Met	1	12	--	793	9-12
71	Hope Academy Northwest Campus	Charter	75.8	71.4	Academic Watch	Not Met	3	15	Above	387	K-12
72*	Hope Academy Cuyahoga Campus	Charter	75.6	77.2	Academic Watch	Not Met	1	15	Below	431	K-8
72*	Pinnacle Academy	Charter	75.6	78.1	Academic Watch	Not Met	1	15	Met	668	K-8
74	Martin Luther King Jr Career Campus	District	74.8	85.6	Academic Watch	Not Met	0	12	--	233	9-12
75*	Hope Academy East Campus	Charter	74.1	75.8	Continuous Improvement	Met	3	15	Below	375	K-8
75*	Daniel E Morgan School	District	74.1	64.6	Academic Watch	Not Met	2	15	Above	355	P,K-8
77	Lincoln-West High School	District	74	74.1	Academic Watch	Not Met	1	12	--	1357	9-12
78	Artemus Ward	District	73.9	72.9	Academic Watch	Not Met	1	15	Met	475	P,K-8
79	Empire School	District	73.8	70.2	Academic Watch	Not Met	2	15	Met	236	K-8
80	Alexander Graham Bell	District	73.7	78.7	Academic Watch	Not Met	1	15	Met	394	P,K-8
81	Gracemount	District	73.5	66.4	Academic Watch	Not Met	1	15	Met	493	K-8
82	Scranton School	District	73.4	69.7	Continuous Improvement	Not Met	1	15	Above	465	K-8
83*	Henry W Longfellow Elementary School	District	73.1	71.9	Academic Watch	Not Met	1	15	Below	252	P,K-8
83*	Wade Park	District	73.1	62.9	Academic Watch	Not Met	2	15	Above	355	P,K-8
85	Life Skills Ctr Of Cleveland	Charter	72.7	72	Academic Watch	Not Met	0	12	--	393	9-12
86	Charles A Mooney School	District	72.4	74.2	Academic Watch	Not Met	0	15	Met	562	K-8
87*	Elite Academy of the Arts	Charter	72	58.1	Continuous Improvement	Met	5	15	Above	238	K-8
87*	Hope Academy Chapelside Campus	Charter	72	68.3	Academic Watch	Not Met	2	15	Above	441	K-8
87*	McKinley School	District	72	72.3	Academic Watch	Not Met	2	15	Met	288	K-8
90	Horizon Science Academy Denison Elementary School	Charter	71.4	77.3	Academic Watch	Not Met	1	8	Met	127	K-5
91	Michael R. White	District	71.3	71.8	Academic Watch	Not Met	3	15	Met	323	K-8
92	Sunbeam	District	70.9	79.9	Academic Watch	Not Met	0	15	Below	207	P,K-8
93	Paul L Dunbar Elementary School	District	70.7	74.9	Academic Watch	Not	0	15	Met	316	P,K-8

						Met						
94	Life Skills Ctr Of Lake Erie	Charter	70.6	75.6	Academic Watch	Not Met	3	12	--		469	9-12, UNG
95	Memorial School	District	70.1	71	Academic Watch	Not Met	2	15	Met		480	P,K-8
96*	Joseph F Landis School	District	69.9	74.3	Academic Emergency	Not Met	1	15	Below		360	K-8
96*	Mound Elementary School	District	69.9	70.4	Academic Emergency	Not Met	1	15	Met		234	K-8
98*	Horizon Science Academy Lorain	Charter	69.7	0	Academic Emergency	Not Met	0	8	--		127	K-12
98*	Carl F Shuler	District	69.7	87.7	Academic Emergency	Not Met	3	12	--		475	9-12
100	Constellation Schools: Mansfield Visual & Performing Arts	Charter	69.2	63	Academic Emergency	Not Met	1	8	--		59	K-8
101	Glenville High School	District	68.8	69.2	Academic Emergency	Not Met	2	12	--		963	9-12
102	Miles School	District	68.6	62.8	Academic Watch	Not Met	0	15	Above		300	P,K-8
103	Hope Academy Cathedral Campus	Charter	68.4	67.7	Academic Emergency	Not Met	1	15	Below		539	K-8
104*	George Washington Carver	District	68.2	68.5	Academic Emergency	Not Met	1	15	Met		433	P,K-8
104*	Hannah Gibbons-Nottingham Elementary School	District	68.2	64.4	Academic Watch	Not Met	2	15	Above		228	P,K-8
104*	John F Kennedy High School	District	68.2	70.9	Academic Emergency	Not Met	0	12	--		839	9-12
107	East Technical High School	District	67.7	71.3	Academic Emergency	Not Met	1	12	--		746	9-12
108	Anton Grdina	District	67.4	64.4	Academic Watch	Not Met	0	15	Above		419	P,K-8
109	John Adams High School	District	67	69.7	Academic Emergency	Not Met	2	12	--		1162	9-12
110	Emile B Desauze Elementary School	District	66.8	66.7	Academic Emergency	Not Met	2	15	Met		284	K-8
111	Joseph M Gallagher School	District	66.7	62.3	Academic Emergency	Not Met	0	15	Above		737	P,K-8
112*	Nathan Hale School	District	66.5	59	Academic Watch	Not Met	0	15	Above		298	K-8
112*	Walton School	District	66.5	69	Academic Emergency	Not Met	0	15	Below		577	K-8
114	Charles Dickens School	District	66.4	64.2	Academic Emergency	Not Met	2	15	Below		307	K-8
115*	Fullerton School	District	66.2	63.8	Academic Emergency	Not Met	0	15	Met		372	K-8
115*	Iowa-Maple Elementary School	District	66.2	63.8	Academic Emergency	Not Met	1	15	Met		318	P,K-8
117*	Buckeye-Woodland School	District	66.1	71.8	Academic Emergency	Not Met	0	15	Below		253	K-8
117*	H Barbara Booker Elementary School	District	66.1	68.6	Academic Emergency	Not Met	0	15	Above		416	K-8
119	Giddings	District	65.7	73.3	Academic Emergency	Not Met	1	15	Below		275	P,K-8
120	Andrew J Rickoff	District	65.6	61.5	Academic Emergency	Not Met	0	15	Above		513	P,K-8
121	Bolton	District	65.5	62.1	Academic Emergency	Not Met	1	15	Met		300	P,K-8



122	Villaview Lighthouse Community School	Charter	65.3	61.7	Academic Emergency	Not Met	0	11	Above	94	K-12
123	Bella Academy of Excellence	Charter	65.2	0	Academic Emergency	Not Met	1	8	--	221	K-8
124*	Apex Academy	Charter	65.1	70.2	Academic Emergency	Not Met	1	15	Below	619	K-8
124*	Robert Fulton School	District	65.1	63.8	Academic Watch	Not Met	0	15	Above	292	K-8
126*	Hope Academy Broadway Campus	Charter	64.8	66.4	Academic Emergency	Not Met	1	15	Below	429	K-8
126*	Adlai Stevenson School	District	64.8	64.1	Academic Emergency	Not Met	1	15	Met	258	K-8
128*	East Clark	District	64.7	59.2	Academic Emergency	Not Met	0	15	Met	452	P,K-8
128*	John D Rockefeller Elementary School	District	64.7	60.9	Academic Emergency	Not Met	0	12	Met	216	K-8
130	Case	District	64.6	62.7	Academic Emergency	Not Met	0	15	Above	353	P,K-8
131	Constellation Schools: Stockyard Community Elementary	Charter	63.4	72.6	Academic Emergency	Not Met	0	12	Below	284	K-6
132	Union Elementary School	District	63.3	59	Academic Emergency	Not Met	0	15	Met	220	K-8
133*	Forest Hill Parkway Elementary School	District	62.8	69.4	Academic Emergency	Not Met	1	15	Met	276	K-8
133*	South High School	District	62.8	66.6	Academic Emergency	Not Met	0	12	--	896	9-12
135	Brooklawn	District	62.3	66.7	Academic Emergency	Not Met	0	15	Below	253	K-8
136	Miles Park School	District	62	64.3	Academic Emergency	Not Met	0	15	Met	497	K-8
137*	East High School	District	61.8	68.5	Academic Emergency	Not Met	0	12	--	717	9-12
137*	Willow School	District	61.8	62.8	Academic Emergency	Not Met	0	15	Above	216	K-8
139	Charles W Eliot School	District	61.6	62.5	Academic Emergency	Not Met	0	15	Met	311	P,K-8
140	Franklin D. Roosevelt	District	61.5	59	Academic Watch	Not Met	0	15	Above	463	P,K-8
141*	Summit Academy Secondary School-Parma	Charter	61.2	63.3	Academic Emergency	Not Met	1	26	Met	185	K, 1-12, UNG
141*	Robert H Jamison School	District	61.2	62.9	Academic Emergency	Not Met	0	15	Met	444	P,K-8
143	Luis Munoz Marin School	District	61	58.9	Academic Watch	Not Met	0	15	Above	773	K-8
144	Mary B Martin School	District	60.9	56	Continuous Improvement	Met	0	15	Above	343	K-8
145*	Audubon	District	60.8	58.2	Academic Emergency	Not Met	0	15	Met	355	K-8
145*	Carl & Louis Stokes Central Academy	District	60.8	57.4	Academic Watch	Not Met	0	15	Above	480	P,K-8
145*	Harvey Rice Elementary School	District	60.8	64.5	Academic Emergency	Not Met	0	15	Met	362	K-8
148	John W Raper School	District	60.2	62.3	Academic Emergency	Not Met	0	15	Below	356	P,K-8
149	Mary M Bethune	District	58.7	57.5	Academic Emergency	Not Met	1	15	Above	349	K-8
150	Woodland Hills School	District	58.3	52.9	Academic Emergency	Not	0	15	Above	300	K-8

						Met					
151	Patrick Henry School	District	57	54.8	Academic Emergency	Not Met	1	15	Met	309	P,K-8
152	Arts Academy West, The	Charter	56.8	64.1	Not Rated	Not Met	1	1	Met	35	K-12
153	Albert B Hart	District	56.6	55.9	Academic Emergency	Not Met	0	15	Met	308	K-8
154	Lion of Judah Academy	Charter	56.2	49.3	Academic Emergency	Not Met	1	7	Met	124	K-8
155	Promise Academy	Charter	56	42.2	Academic Emergency	Not Met	0	12	--	544	9-12
156	Marion-Sterling Elementary School	District	55.1	57.6	Academic Emergency	Not Met	0	15	Below	469	P,K-8
157*	Virtual Schoolhouse, Inc.	Charter	55	63.3	Academic Emergency	Not Met	0	21	Below	337	K-12
157*	Paul Revere Elementary School	District	55	62	Academic Emergency	Not Met	0	15	Below	370	P,K-8
159	Genesis Academy	District	52.9	37.4	Academic Emergency	Not Met	0	14	--	203	6-11
160	Cleveland Lighthouse Community School	Charter	52.7	64.1	Academic Emergency	Not Met	1	5	Above	162	K-12
161	Cleveland Academy for Scholarship Technology and Leadership	Charter	46.3	42.5	Academic Emergency	Not Met	0	12	--	295	9-12,UNG

Source: Ohio Department of Education

Notes: 1) Rankings are based on Performance Index score for the 2009-10 school year. 2) Schools without a Performance Index score were removed.

\* These schools were tied for the same ranking number.