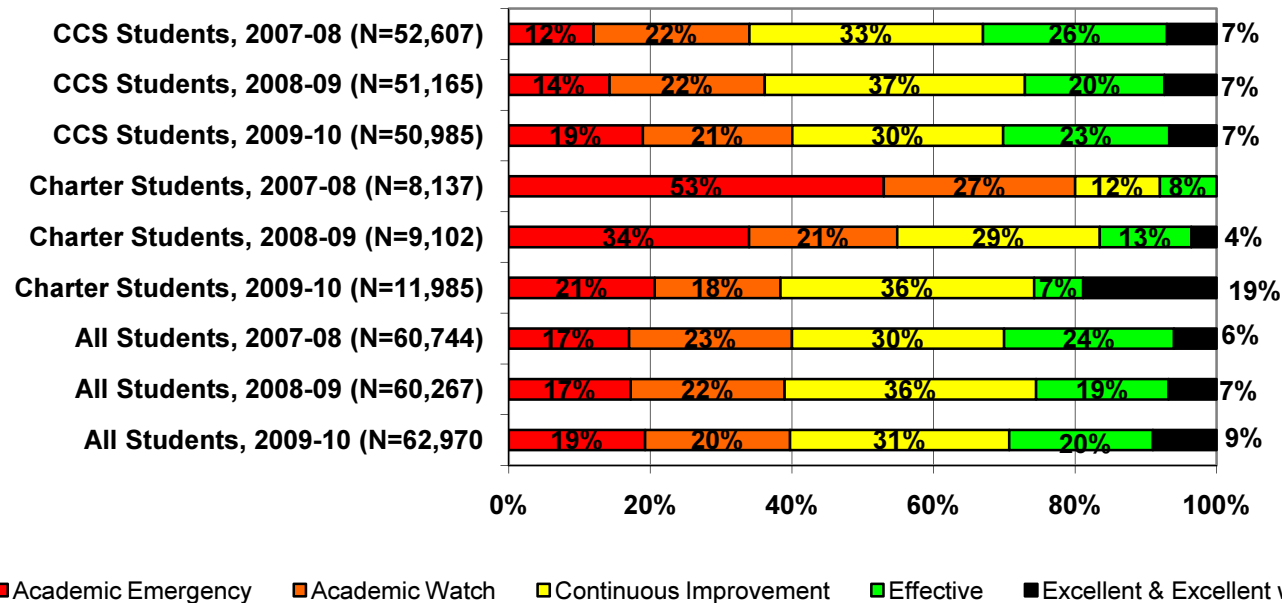




## Detailed Analysis of School Performance in Columbus (2009-10)

*Graph I: Percent of Columbus Students in Public Schools by State Designation (2007-08, 2008-09, 2009-10)*



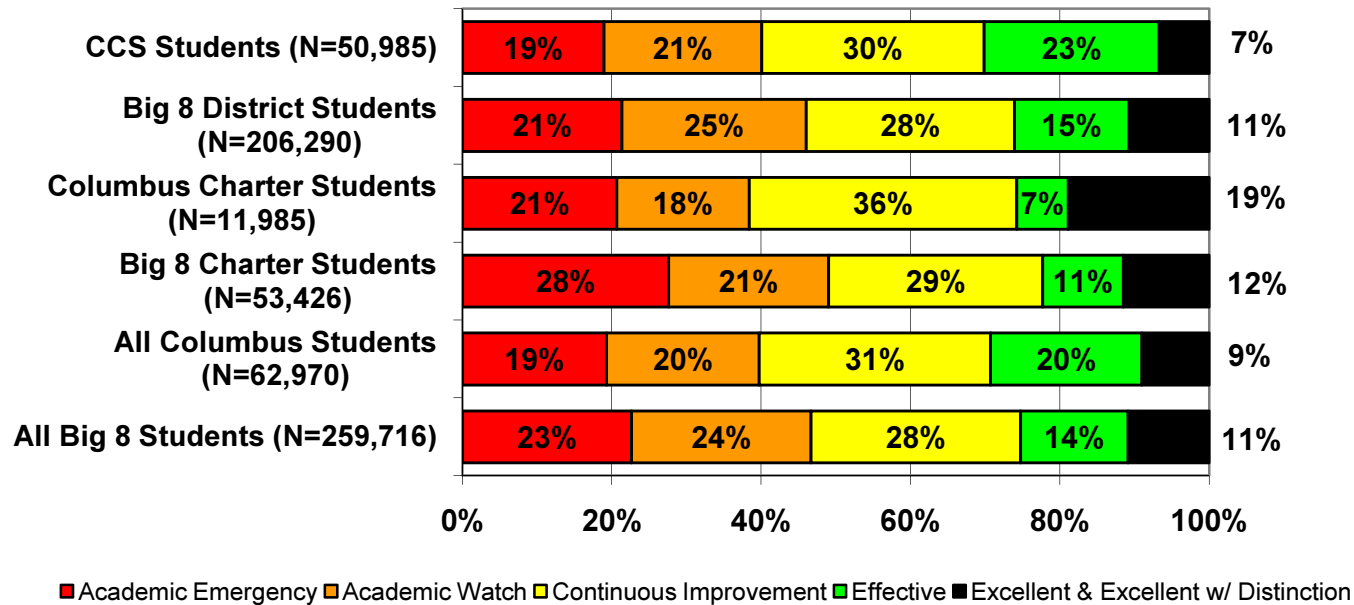
Source: Ohio Department of Education interactive Local Report Card

Note: This chart does not include students in schools that are unrated and students attending charter e-schools. Totals may not equal 100 due to rounding

### **Percent of Columbus Students in Public Schools (District and Charter) by State Designation.**

Graph I shows the percent of Columbus students in district and charter schools by state designation for the 2007-08, 2008-09, and 2009-10 school years. Overall, the percent of students attending poorly rated schools has remained remarkably steady (at about 40 percent), but the percent of students attending failing charter schools has declined markedly. In 2009-10, 21 percent of Columbus charter school students were attending schools the state rated Academic Emergency, down from 53 percent in 2007-08. Meanwhile, the number of Columbus charter school students attending schools rated Effective or Excellent rose from just eight percent in 2007-8 to 26 percent in 2009-10.

**Graph II: Percent of Columbus Students in Public Schools by State Designation versus the Big 8 Average\***



Source: Ohio Department of Education interactive Local Report Card

Note: This chart does not include students in schools that are unrated and students attending charter e-schools. Totals may not equal 100 due to rounding.

**Percent of Columbus Students in Public Schools by State Designation versus the Big 8 Average.**

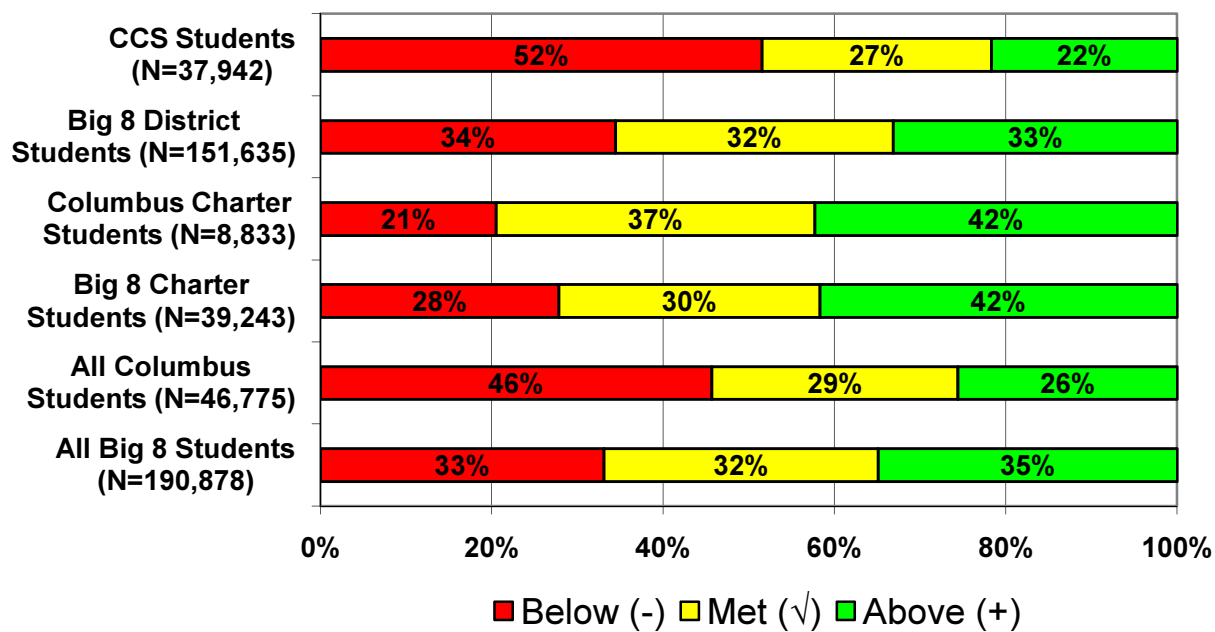
Graph II shows how Columbus district and charter school students performed against the Big 8 averages for district and charter performance. This helps to put the performance of students in Columbus into a larger context (e.g., how do they perform against other urban students in Ohio?).

Columbus students in public schools (in district and charter) are more likely than their Big 8 peers to attend a highly rated school. In 2009-10, just about one in three Columbus students (district and charter) attended a school rated Excellent (including Excellent with

\* The Big 8 districts are defined as Ohio’s largest urban districts: Akron, Canton, Cincinnati, Cleveland, Columbus, Dayton, Toledo, and Youngstown.

Distinction) or Effective by the state. This is in contrast to 25 percent of students in the Big 8 cities. Conversely, while 47 percent of students in the Big 8 attended schools rated Academic Emergency or Academic Watch, just 39 percent of Columbus students attended such schools.

**Graph III: Percent of Columbus Students in Public Schools by Value-added Composite Score versus the Big 8 Average (2009-10)**



Source: Ohio Department of Education interactive Local Report Card

Note: This chart does not include students in schools that did not receive a value-added composite score or students attending charter e-schools.

**Percent of Columbus Students in Public Schools by Value-added Composite Score versus the Big 8 Average.** Ohio’s local report cards include each school’s “value-added”—how much progress students in grades four through eight made in reading and math over the course of one year compared to how much the state expected them to gain (for a detailed explanation go to: [http://www.edexcellence.net/detail/news.cfm?news\\_id=735&id=130](http://www.edexcellence.net/detail/news.cfm?news_id=735&id=130)) and for information on changes made to the calculations this year, go to: <http://edexcellence.net/gadfly/index.cfm?issue=591#a6341>). Using this information Ohio determines if each school made “Above Expected Growth,” “Expected Growth,” or “Below Expected Growth.”

Columbus students are less likely than their Big 8 peers to attend a school (district or charter) that met or exceeded the state's growth expectations, with 55 percent of Columbus students and 67 percent of Big 8 students attending such a school in 2009-10. In 2009-10, 79 percent of Columbus charter students attended a school that saw at least one year's worth of growth, but only 49 percent of Columbus district students met or exceeded expected growth.

**A note on Fordham sponsored schools**

In 2009-10, the Thomas B. Fordham Foundation sponsored six schools. One was rated Effective (B), four were rated Continuous Improvement (C) and one was rated Academic Emergency (F). In Columbus, the Thomas B. Fordham Foundation serves as sponsor for Columbus Collegiate Academy and the KIPP Journey Academy.

***Table I: Columbus Public Schools (District and Charter) Ranked by Performance Index Score***

The following pages list Columbus' public charter and district schools ranked by Performance Index (PI) score<sup>†</sup> for the 2009-10 school year. Numerous other performance indicators are also included, but the Performance Index score was selected for ranking the schools because it provides an overall indication of how well students perform on all tested subjects in grades 3 through 8 and the Ohio Graduation Test.

We strongly encourage readers to look closely at the number of standards met and the number of standards possible. A school with a large number of possible standards and possible standards met has gotten a large percentage of students to the state proficiency goals.

We also encourage readers to consider schools' value-added results. Where the Performance Index reflects student achievement at one point in time, value-added tells us how a school is doing at helping its students make progress from year to year. For more on value-added, see Fordham's value-added primer on our website: [http://www.edexcellence.net/detail/news.cfm?news\\_id=735&id=130](http://www.edexcellence.net/detail/news.cfm?news_id=735&id=130).

---

<sup>†</sup> The Performance Index score is calculated by multiplying the percentage of students that are untested, below basic/limited, basic, proficient, accelerated, or advanced by weights ranging from 0 for untested to 1.2 for advanced students. The totals are then summed up to obtain the school or district's PI score. PI scores range from 0 to 120, and the state has set the goal for all schools to achieve a PI score of 100 or better. For a complete description of how the Ohio Department of Education calculates the PI score see their website here: <http://www.ode.state.oh.us/GD/DocumentManagement/DocumentDownload.aspx?DocumentID=29878>.

**Table I: Columbus Public Schools (District and Charter) Ranked by Performance Index Score**

Rank	Building Name	Type	PI Score 09-10	PI Score 08-09	Designation 09-10	Overall AYP 09-10	# of standards met 09-10	# of standards possible 09-10	Value-added Composite 09-10	Enrollment	Grade Span
1	Clinton Elementary School	District	106.7	102.7	Excellent with Distinction	Met	8	8	Above	364	K-5
2	Columbus Alternative High School	District	103.3	104.2	Excellent	Met	12	12	--	635	9-12
3	Centennial High School	District	102.6	105.9	Excellent	Not Met	11	12	--	823	9-12
4	Winterset Elementary School	District	102.1	106.1	Excellent	Met	5	8	Below	296	K-5,P
5	Oakstone Community School	Charter	101.8	97.1	Excellent	Met	22	25	Met	191	K-12
6*	Arts & College Preparatory Academy	Charter	101.7	97	Excellent	Met	12	12	--	243	9-12
6*	Charles School at Ohio Dominican University	Charter	101.7	99	Excellent	Met	10	11	--	250	9-12
8	Indian Springs Elementary School	District	101.4	103.3	Excellent	Met	8	8	Below	423	K-5
9	Alpine Elementary School	District	99.4	100.1	Effective	Met	7	8	Below	492	K-5
10*	Colerain Elementary School	District	99.2	100.8	Effective	Not Met	7	8	Below	189	K-5,P
10*	Gables Elementary School	District	99.2	95.5	Excellent	Met	6	8	Above	317	K-5
10*	Graham School, The	Charter	99.2	95.1	Effective	Met	10	12	--	232	9-12
13	Indianola Informal Alternative School	District	97.2	100.1	Excellent	Met	12	15	Above	558	K-8
14	Horizon Science Academy Columbus	Charter	96.8	101.3	Excellent	Met	12	12	--	363	9-12
15	Whetstone High School	District	96.6	97.3	Effective	Not Met	9	12	--	998	9-12
16	Columbus Collegiate Academy	Charter	96.1	92.9	Effective	Not Met	3	5	Above	83	6-8
17	Fort Hayes Arts and Academic HS	District	94	93.8	Effective	Met	8	12	--	627	9-12
18	Beechcroft High School	District	93.7	87.9	Effective	Met	9	12	--	779	9-12
19	Eastmoor Academy	District	93.4	93.1	Effective	Met	8	12	--	700	9-12
20	Cranbrook Elementary School	District	93.2	98.5	Effective	Not Met	3	8	Below	303	K-5
21	Independence High School	District	92.9	95	Effective	Met	7	12	--	874	9-12
22	Performance Academy Eastland	Charter	92.6	79.1	Effective	Met	7	10	Above	149	K-8
23	FCI Academy	Charter	92	87	Excellent	Met	17	26	Above	453	K-12
24	South High School	District	91.9	82.4	Effective	Not Met	3	12	--	518	9-12
25*	Ridgeview Middle School	District	91.8	90.5	Effective	Not Met	4	8	Below	498	6-8
25*	Columbus Preparatory Academy	Charter	91.8	82.7	Excellent	Met	9	15	Above	622	K-12
27	Dominion Middle School	District	91.7	89.4	Effective	Met	5	8	Below	551	6-8
28	Noble Academy-Columbus	Charter	91.4	96.8	Excellent	Not Met	7	12	Above	138	K-5
29	Berwick Alternative Elementary School	District	91.3	97.2	Effective	Not Met	5	12	Below	598	K-6,P
30	Columbus Spanish Immersion Elementary School	District	91	93	Effective	Met	8	15	Met	391	K-8
31	Cedarwood Alternative Elementary School	District	90.9	92.4	Effective	Met	3	8	Below	357	K-5,P
32	Northland High School	District	90.7	88.9	Effective	Met	6	12	--	1148	9-12
33	Stewart Alternative Elementary School	District	89.9	94.3	Continuous	Met	5	8	Below	287	K-5

					Improvement						
34*	Georgian Heights Alternative Elementary School	District	89.7	89.1	Continuous Improvement	Not Met	4	8	Met	450	K-5
34*	A+ Arts Academy	Charter	89.7	79.5	Continuous Improvement	Met	2	8	Above	140	6-8
36	Duxberry Park Alternative Elementary School	District	89.5	88.6	Effective	Met	4	8	Above	220	K-5,P
37	Valleyview Elementary School	District	89.4	87.6	Effective	Met	5	8	Above	334	K-5,P
38	Avalon Elementary School	District	89.3	89.2	Continuous Improvement	Not Met	2	8	Below	539	K-5
39	Maize Road Elementary School	District	89.2	93	Effective	Met	4	8	Above	329	K-5,P
40	Westgate Alternative Elementary School	District	89	86.9	Effective	Met	5	8	Above	375	K-5,P
41	West Mound Elementary School	District	88.9	86.8	Continuous Improvement	Met	3	8	Below	441	K-5,P
42	Arts Impact Middle School (Aims)	District	88.7	82.9	Continuous Improvement	Not Met	3	8	Met	487	6-8
43	Ecole Kenwood Alternative Elementary School	District	88.2	87.7	Effective	Not Met	5	15	Above	369	K-8
44	Woodcrest Elementary School	District	86.9	88.3	Effective	Met	3	8	Above	382	K-5,P
45	Olde Orchard Alternative Elementary School	District	86.8	91	Continuous Improvement	Not Met	3	8	Below	488	K-5
46	Marion-Franklin High School	District	86.7	84.5	Continuous Improvement	Not Met	4	12	--	964	9-12
47*	Briggs High School	District	86.1	89.7	Continuous Improvement	Not Met	5	12	--	1019	9-12
47*	Oakland Park Alternative Elementary	District	86.1	86.9	Continuous Improvement	Met	1	8	Met	312	K-5,P
49	West High School	District	85.8	80.4	Continuous Improvement	Not Met	0	12	--	1017	9-12
50	Cornerstone Academy Community	Charter	85.5	92.7	Continuous Improvement	Not Met	2	10	Met	262	K-12
51	Devonshire Alternative Elementary School	District	85.3	91.5	Continuous Improvement	Not Met	1	8	Below	483	K-5,P
52	Walnut Ridge High School	District	85.1	86.6	Continuous Improvement	Not Met	3	12	--	850	9-12
53	Columbus Preparatory and Fitness Academy	Charter	84.6	82.1	Continuous Improvement	Met	3	5	Below	85	K-8
54	Northland Preparatory and Fitness Academy	Charter	84.2	76.2	Continuous Improvement	Met	3	15	Above	216	K-8
55*	Woodward Park Middle School	District	83.8	80.5	Continuous Improvement	Not Met	1	8	Above	848	6-8
55*	Zenith Academy	Charter	83.8	78.9	Effective	Met	4	15	Above	363	K-12
57	Easthaven Elementary School	District	83.6	82.6	Effective	Met	3	8	Above	306	K-5,P
58*	Oakmont Elementary School	District	83.3	81.3	Continuous Improvement	Met	1	8	Met	298	K-5
58*	Parsons Elementary School	District	83.3	85	Continuous Improvement	Not Met	2	8	Below	441	K-5,P
60	Salem Elementary School	District	83	83.8	Continuous Improvement	Not Met	2	8	Met	345	K-5
61	Forest Park Elementary School	District	82.9	84.5	Effective	Not Met	1	8	Above	381	K-5
62*	Scottwood Elementary School	District	82.7	81.2	Continuous Improvement	Not Met	1	8	Below	357	K-5,P
62*	Academic Acceleration Academy	Charter	82.7	58.5	Continuous Improvement	Met	0	7	--	148	9-12
62*	Horizon Science Academy Columbus Middle School	Charter	82.7	87.2	Continuous Improvement	Met	2	8	Above	229	6-8

65*	Monroe Alternative Middle School	District	82.5	81.1	Continuous Improvement	Not Met	1	8	Met	427	6-8
65*	North Linden Elementary School	District	82.5	81.8	Continuous Improvement	Not Met	2	8	Met	300	K-5
67	International Acad Of Columbus	Charter	81.9	80.2	Continuous Improvement	Met	5	15	Met	188	K-10
68	Westmoor Middle School	District	81.7	76.9	Continuous Improvement	Not Met	1	8	Met	478	6-8
69	Lindbergh Elementary School	District	81.6	78.8	Continuous Improvement	Met	3	8	Below	265	K-5
70	Avondale Elementary School	District	80.9	85.4	Continuous Improvement	Not Met	0	8	Met	292	K-5
71*	Fifth Avenue Alternative Elementary School	District	80.8	81.3	Effective	Met	0	8	Above	230	K-5
71*	Huy Elementary School	District	80.8	87.8	Continuous Improvement	Met	2	8	Below	324	K-5,P
71*	Maybury Elementary School	District	80.8	79.9	Continuous Improvement	Not Met	1	8	Below	350	K-5
74	Brookhaven High School	District	80.5	80.6	Continuous Improvement	Not Met	0	12	--	871	9-12
75	Wedgewood Middle School	District	80.2	77.7	Continuous Improvement	Not Met	1	8	Below	570	6-8
76	East High School	District	79.4	83.1	Academic Watch	Not Met	1	12	--	705	9-12
77*	Johnson Park Middle School	District	79.3	75.8	Academic Watch	Not Met	1	8	Above	370	6-8
77*	Shady Lane Elementary School	District	79.3	80	Academic Emergency	Not Met	1	8	Below	330	K-5
77*	Premier Academy of Ohio	Charter	79.3	62.2	Continuous Improvement	Met	3	17	Above	237	7-12
80*	Parkmoor Elementary School	District	78.8	84.1	Continuous Improvement	Met	1	8	Below	231	K-5,P
80*	Whitehall Preparatory and Fitness Academy	Charter	78.8	77.7	Continuous Improvement	Met	3	15	Above	278	K-8
82	Binns Elementary School	District	78.7	84.5	Academic Watch	Not Met	2	8	Below	272	K-5
83	Hamilton Local Digital Academy	Charter	77.5	72.1	Continuous Improvement	Met	2	11	--	128	K-12
84	Millennium Community School	Charter	77.4	68.3	Continuous Improvement	Met	2	15	Above	676	K-8
85	Educational Academy at Linden	Charter	77.2	70.7	Academic Watch	Not Met	1	8	Below	104	K-12
86	Summit Academy Transition High School-Columbus	Charter	77.1	68.5	Continuous Improvement	Met	1	6	--	34	8-12,UNG
87	West Broad Elementary School	District	76.7	78.8	Academic Watch	Not Met	0	8	Below	447	K-5,P
88	Yorktown Middle School	District	76.6	74.5	Academic Watch	Not Met	1	8	Below	476	6-8
89	Dana Avenue Elementary School	District	76.4	80.2	Academic Watch	Not Met	0	8	Below	364	K-5,P
90*	Columbus Africentric Early College	District	76.1	75.8	Academic Watch	Not Met	5	19	Met	581	6-12
90*	Northtowne Elementary School	District	76.1	80.6	Academic Watch	Not Met	1	8	Met	262	K-5,P
92	Great Western Academy	Charter	75.9	73.8	Academic Watch	Not Met	2	15	Below	387	K-8
93*	Eakin Elementary School	District	75.4	75.4	Continuous Improvement	Not Met	1	8	Above	329	K-5

93*	Franklin Alternative Middle School	District	75.4	75.9	Continuous Improvement	Met	1	8	Below	433	6-8
95	Mifflin High School	District	75.3	90.8	Academic Watch	Not Met	0	12	--	672	9-12
96	Siebert Elementary School	District	75.1	80.2	Academic Watch	Not Met	1	8	Below	263	K-5,P
97	Innis Elementary School	District	75	76.3	Academic Watch	Not Met	1	8	Met	357	K-5
98	Buckeye Middle School	District	74.7	74.4	Academic Watch	Not Met	0	8	Below	537	6-8
99	Focus Learning Academy of Southeastern Columbus	Charter	74.5	58.3	Continuous Improvement	Not Met	1	12	--	267	9-12
100	KIPP: Journey Academy	Charter	74.3	61.6	Continuous Improvement	Met	1	6	Above	138	5-8
101	Beatty Park Elementary School	District	74.1	75.7	Academic Watch	Not Met	0	5	Below	117	K-5
102*	Harvard Avenue Community School	Charter	73.9	61.4	Continuous Improvement	Met	2	12	Above	609	K-8
102*	Pshtecin Public School	Charter	73.9	75.2	Academic Watch	Not Met	1	7	--	92	8-12
104	Sherwood Middle School	District	73.8	74.7	Academic Watch	Not Met	1	8	Below	416	6-8
105	Starling Middle School	District	73.6	68.2	Academic Watch	Not Met	0	8	Below	283	6-8
106	Literature Based Alternative @ Hubbard Elementary School	District	73.5	79.2	Academic Watch	Not Met	1	8	Met	163	K-5,P
107	Eastgate Elementary School	District	73.4	65.9	Academic Watch	Not Met	1	8	Above	299	K-5,P
108	East Columbus Elementary School	District	73.3	79.1	Academic Watch	Not Met	1	8	Below	348	K-5,P
109	Como Elementary School	District	72.6	83.1	Continuous Improvement	Met	1	8	Below	370	K-5,P
110	East Linden Elementary School	District	72.5	76.8	Academic Watch	Not Met	1	8	Met	270	K-5,P
111	Horizon Science Academy Elementary School	Charter	71.9	74.3	Academic Watch	Not Met	1	8	Met	230	K-5
112	Valley Forge Elementary School	District	71.7	75.1	Academic Watch	Not Met	1	8	Below	382	K-5,P
113	Southwood Elementary School	District	71.3	76.1	Continuous Improvement	Not Met	1	8	Above	329	K-5,P
114	South Scioto Academy	Charter	71.1	67.2	Academic Watch	Not Met	0	10	Met	169	K-7
115*	Hilltonia Middle School	District	70.8	70.7	Academic Watch	Not Met	0	8	Below	568	6-8
115*	Columbus Arts & Technology Academy	Charter	70.8	62.6	Continuous Improvement	Not Met	3	15	Above	94	K-12
117	Groveport Community School	Charter	70.7	67.2	Academic Watch	Not Met	1	15	Below	200	K-8
118*	Arlington Park Elementary School	District	70.6	77.2	Academic Watch	Not Met	1	8	Met	238	K-5,P
118*	Mifflin Alternative Middle School	District	70.6	72.2	Academic Watch	Not Met	1	8	Met	301	6-8
120	Fairmoor Elementary School	District	70.4	71.4	Academic Watch	Not Met	1	8	Below	489	K-5
121	Arts and Science Preparatory Academy	Charter	70.3	60.4	Academic Watch	Not Met	1	15	Met	21	K-12
122	Indianola Math, Science and Technology Middle	District	70.1	67.3	Academic Watch	Not	0	8	Above	352	6-8



	School					Met					
123*	Fair Alternative Elementary School	District	70	73.9	Academic Watch	Not Met	1	8	Met	247	K-5,P
123*	Academy of Columbus	Charter	70	62.1	Continuous Improvement	Met	1	15	Above	347	K-8
125*	Clinton Middle School	District	69.9	69.9	Academic Emergency	Not Met	0	8	Below	382	6-8
125*	Hamilton STEM Elementary School	District	69.9	66.2	Academic Watch	Not Met	1	10	Above	422	K-6,P
125*	Highland Elementary School	District	69.9	72.4	Academic Emergency	Not Met	1	8	Met	322	K-5,P
125*	Columbus Bilingual Academy	Charter	69.9	61.5	Academic Emergency	Not Met	2	10	Above	185	K-12
129	Liberty Elementary School	District	69.8	81.4	Academic Emergency	Not Met	1	8	Below	311	K-5
130	Life Skills Center of Columbus North	Charter	69.7	62.8	Academic Emergency	Not Met	0	7	--	274	9-12,UNG
131	Moler Elementary School	District	69.6	82.1	Academic Emergency	Not Met	1	8	Below	160	K-5,P
132	Linden STEM Elementary School	District	69.4	70.7	Academic Emergency	Not Met	1	10	Met	526	K-6,P
133	Cassady Alternative Elementary School	District	69.2	73.2	Academic Watch	Not Met	1	8	Above	344	K-5
134*	Linden-Mckinley STEM School on Arcadia	District	69.1	70.9	Academic Emergency	Not Met	1	14	Met	554	7,9-12
134*	Scholarts Preparatory and Career Center for Children	Charter	69.1	56.4	Academic Emergency	Not Met	1	6	Met	154	K-12
136*	Windsor STEM Elementary School	District	67.9	70.6	Academic Emergency	Not Met	1	10	Met	331	K-6,P
136*	Columbus Humanities, Arts and Technology Academy	Charter	67.9	68.9	Academic Watch	Not Met	1	15	Above	365	K-12
138	Ohio Avenue Elementary School	District	67.7	66.6	Academic Emergency	Not Met	1	8	Below	323	K-5,P
139	Harrisburg Pike Community School	Charter	67.2	67.1	Academic Emergency	Not Met	0	8	Below	403	K-8
140	Burroughs Elementary School	District	67	68.6	Academic Emergency	Not Met	0	8	Below	337	K-5,P
141	South Mifflin STEM Elementary School	District	66.6	69	Academic Emergency	Not Met	1	10	Below	318	K-6,P
142*	Douglas Alternative Elementary School	District	66.4	70.4	Academic Watch	Not Met	1	8	Above	213	K-5
142*	Granville T Woods Comm Shule	Charter	66.4	73.8	Academic Emergency	Not Met	0	3	--	68	K-8
144	Leawood Elementary School	District	66.1	66.3	Academic Emergency	Not Met	0	8	Below	290	K-5,P
145	Alum Crest High School	District	66	79.4	Academic Emergency	Not Met	2	12	--	129	9-12
146	Westside Academy	Charter	65.7	73.6	Academic Emergency	Not Met	1	5	Met	127	K-8
147	Broadleigh Elementary School	District	65.5	69.3	Academic Emergency	Not Met	1	8	Met	289	K-5,P
148	Columbus Africentric Early College Elementary School	District	64.4	71.7	Academic Emergency	Not Met	1	8	Below	360	K-5
149	Sullivant Elementary School	District	64.1	70.6	Academic Emergency	Not Met	1	8	Below	236	K-5,P
150	Summit Academy Middle School - Columbus	Charter	63.9	61.5	Academic Emergency	Not Met	0	6	Met	33	4-9,UNG

151	Midnimo Cross Cultural Community School	Charter	63.5	66.4	Academic Watch	Not Met	1	8	Above	140	K-12
152	Trevitt Elementary School	District	63.4	69.4	Academic Emergency	Not Met	1	8	Below	207	K-5,P
153*	Medina Middle School	District	63	62.1	Academic Emergency	Not Met	1	8	Below	349	6-8
153*	Youthbuild Columbus Community	Charter	63	90.7	Continuous Improvement	Met	1	7	--	218	9-12,UNG
155	Beery Middle School	District	62.7	64.2	Academic Emergency	Not Met	1	8	Met	286	6-8
156	Eastmoor Middle School	District	62.6	64.7	Academic Emergency	Not Met	1	8	Below	352	6-8
157	Deshler Elementary School	District	62.2	64.3	Academic Emergency	Not Met	0	8	Above	219	K-5,P
158	Sullivant Avenue Community School	Charter	61.9	59.3	Academic Emergency	Not Met	0	10	Met	438	K-5
159	Watkins Elementary School	District	61.8	65.9	Academic Emergency	Not Met	1	8	Below	400	K-5,P
160	Livingston Elementary School	District	60.6	64.8	Academic Emergency	Not Met	1	8	Above	269	K-5,P
161	COLUMBUS GLOBAL ACADEMY	District	59.8	61	Academic Emergency	Not Met	1	19	Met	452	6-12
162	Focus Learning Academy of Northern Columbus	Charter	59.4	75.5	Academic Emergency	Not Met	2	15	--	291	K-12
163	Weinland Park Elementary School	District	59.3	59	Academic Emergency	Not Met	1	8	Met	352	K-5,P
164	Heyl Avenue Elementary School	District	58.5	59.7	Academic Emergency	Not Met	1	8	Met	225	K-5,P
165	Southmoor Middle School	District	56.6	54.1	Academic Emergency	Not Met	0	8	Below	266	6-8
166*	Champion Middle School	District	56.5	55.7	Academic Emergency	Not Met	0	8	Below	295	6-8
166*	Clearbrook Middle School	District	56.5	59.9	Academic Emergency	Not Met	0	6	Above	72	6-8
168	Focus Learning Academy of Southwest Columbus	Charter	56	50	Academic Watch	Not Met	0	12	--	335	9-12
169	Summit Academy Columbus	Charter	55.2	55.1	Academic Emergency	Not Met	1	6	Below	48	K,1-8,UNG
170	Providence Academy for Student Success	Charter	55	0	Academic Emergency	Not Met	0	22	--	278	K-12
171	Lincoln Park Elementary School	District	52.1	63.4	Academic Emergency	Not Met	1	8	Met	337	K-5,P
172	Fairwood Alternative Elementary School	District	52	63.3	Academic Emergency	Not Met	1	8	Below	388	K-5,P
173*	C.M. Grant Leadership Academy	Charter	51.6	42.1	Academic Emergency	Not Met	1	5	Below	176	K-6
173*	Cesar Chavez College Preparatory School	Charter	51.6	0	Not Rated	Met	1	1	--	50	K-5
175	Crittenton Community School	Charter	49	43.8	Academic Watch	Not Met	0	4	Above	86	6-9
176	Special Education Center	District	47.3	37.3	Not Rated	Not Met	1	1	Met	286	P,K,1-12,UNG

Source: Ohio Department of Education

Notes: 1) Rankings are based on Performance Index score for the 2009-10 school year. 2) Schools without a Performance Index score were removed.

\* These schools were tied for the same ranking number.

Detailed Analysis of Public School Performance in Columbus, 2009-10

Thomas B. Fordham Institute, August 27, 2010