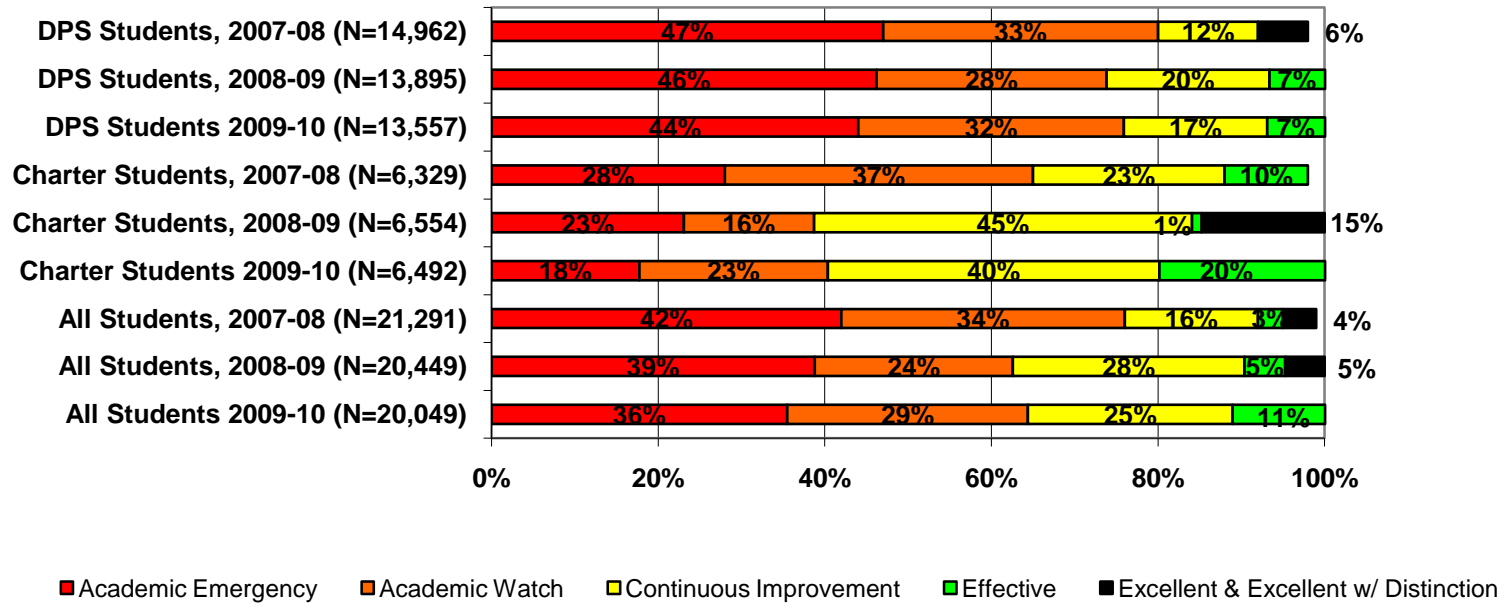




## Detailed Analysis of School Performance in Dayton (2009-10)

*Graph I: Percent of Dayton Students in Public Schools by State Designation (2007-08, 2008-09, and 2009-10)*



Source: Ohio Department of Education interactive Local Report Card

Note: This chart does not include students in schools that are unrated and students attending charter e-schools. Totals may not equal 100 due to rounding.

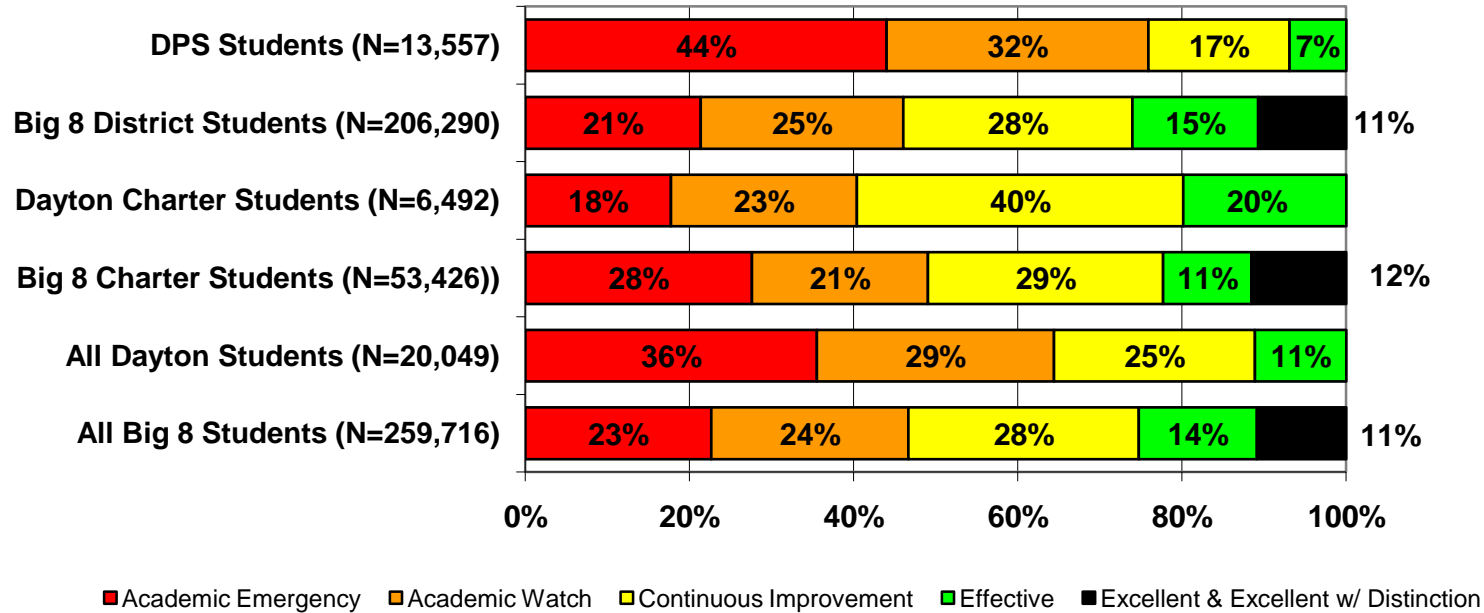
### **Percent of Dayton Students in Public Schools (District and Charter) by State Designation.**

Graph I shows the percent of Dayton students in district and charter schools by state designation for the 2007-08, 2008-09, and 2009-10 school years.

The public schools in Dayton took a step backwards in 2009-10. No student in Dayton attended a public school (district or charter) that was rated Excellent or Excellent with Distinction, while in 2008-9 five percent of the city’s children attended a top-rated school. In 2009-10, just 36 percent of students attended a school rated B or C (Effective or Continuous Improvement), while 65 percent of students in Dayton attended a school rated D or F.

This year Dayton’s charter schools dramatically outperformed the district schools. Sixty percent of charter students attended a school rated B or C by the state while only 24 percent of district students attended such schools. More than 75 percent of the district’s students attended a school rated D or F while just 40 percent of charter students attended such poorly rated schools.

*Graph II: Percent of Dayton Students in Public Schools by State Designation versus the Big 8 Average\**



Source: Ohio Department of Education interactive Local Report Card

Note: This chart does not include students in schools that are unrated and students attending charter e-schools. Totals may not equal 100 due to rounding.

**Percent of Dayton Students in Public Schools by State Designation versus the Big 8 Average.**

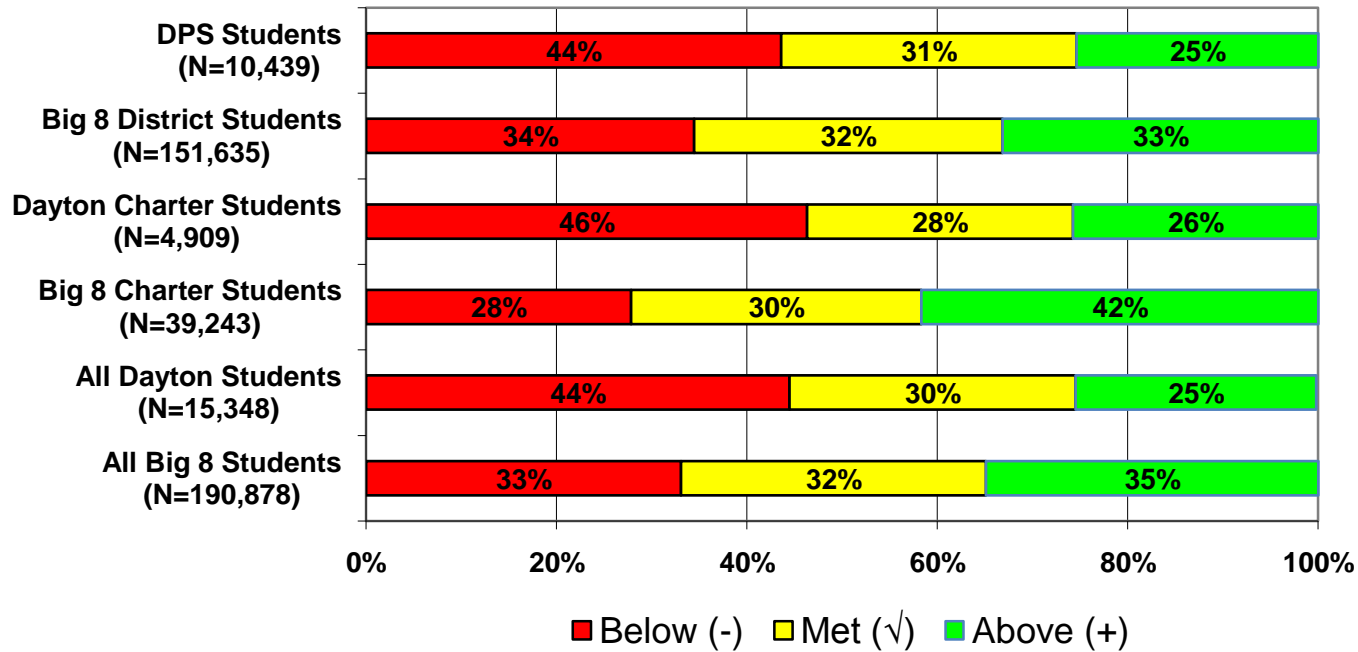
Graph II shows how Dayton district and charter school students performed against the Big 8 averages for district and charter performance. This helps to put the performance of students in Dayton into a larger context (e.g., how do they perform against other urban students in Ohio?)

Dayton district students are more likely than their Big 8 district peers to attend a school rated D or F by the state. Sixty-five percent of Dayton’s district students are in a school rated Academic Emergency or Academic Watch by the state, versus 46 percent of students in Big 8 district schools. Meanwhile, Dayton charter

\* The Big 8 districts are defined as Ohio’s largest urban districts: Akron, Canton, Cincinnati, Cleveland, Columbus, Dayton, Toledo, and Youngstown.

school students are less likely than their Big 8 charter peers to attend a failing school – 40 percent of Dayton charter school students attend a school rated D or F by the state compared with 49 percent of students in Big 8 charter schools.

**Graph III: Percent of Dayton Students in Public Schools by Value-added Composite Score versus the Big 8 Average (2009-10)**



Source: Ohio Department of Education interactive Local Report Card

Note: This chart does not include students in schools that did not receive a value-added composite score or students attending charter e-schools.

**Percent of Dayton Students in Public Schools by Value-added Composite Score versus the Big 8 Average.** Ohio’s local report cards include each school’s “value-added”—how much progress students in grades four through eight made in reading and math over the course of one year compared to how much the state expected them to gain (for a detailed explanation go to: [http://www.edexcellence.net/detail/news.cfm?news\\_id=735&id=130](http://www.edexcellence.net/detail/news.cfm?news_id=735&id=130), and for information on changes made to the calculations this year, go to: <http://edexcellence.net/gadfly/index.cfm?issue=591#a6341>). Using this information Ohio determines if each school made “Above Expected Growth,” “Expected Growth,” or “Below Expected Growth.”

In Dayton 44 percent of all students in public schools (charter and district) attended a school that failed to make one year’s worth of expected academic growth. Dayton district students were more likely than their charter peers to attend a school that saw expected or better than expected growth. While 44 percent of Dayton

charter students attended a school that met or exceeded the state's growth targets, 56 percent of Dayton Public School District students attended a school rated as such.

**A note on Fordham-sponsored schools**

In 2009-10, the Thomas B. Fordham Foundation sponsored six schools. One was rated Effective (B), four were rated Continuous Improvement (C) and one was rated Academic Emergency (F). In Dayton, the Thomas B. Fordham Foundation serves as sponsor for Dayton Leadership Academies-Dayton View Campus and Dayton Leadership Academies-Dayton Liberty Campus.

***Table I: Dayton Public Schools (District and Charter) Ranked by Performance Index Score***

The following pages list Dayton's public charter and district schools ranked by Performance Index (PI) score<sup>†</sup> for the 2009-10 school year. Among the top ten rated schools in the city, eight were charters. Numerous other performance indicators are also included, but the Performance Index score was selected for ranking the schools because it provides an overall indication of how well students perform on all tested subjects in grades 3 through 8 and the Ohio Graduation Test.

We strongly encourage readers to look closely at the number of standards met and the number of standards possible. A school with a large number of possible standards and possible standards met has gotten a large percentage of students to the state proficiency goals.

We also encourage readers to consider schools' value-added results. Where the Performance Index reflects student achievement at one point in time, value-added tells us how a school is doing at helping its students make progress from year to year. For more on value-added, see Fordham's value-added primer on our website: [http://www.edexcellence.net/detail/news.cfm?news\\_id=735&id=130](http://www.edexcellence.net/detail/news.cfm?news_id=735&id=130).

---

<sup>†</sup> The Performance Index score is calculated by multiplying the percentage of students that are untested, below basic/limited, basic, proficient, accelerated, or advanced by weights ranging from 0 for untested to 1.2 for advanced students. The totals are then summed up to obtain the school or district's PI score. PI scores range from 0 to 120, and the state has set the goal for all schools to achieve a PI score of 100 or better. For a complete description of how the Ohio Department of Education calculates the PI score see their website here: <http://www.ode.state.oh.us/GD/DocumentManagement/DocumentDownload.aspx?DocumentID=29878>.

**Table I: Dayton Public Schools (District and Charter) Ranked by Performance Index Score**

Rank	Building Name	Type	PI Score 09-10	PI Score 08-09	Designation 09-10	Overall AYP 09-10	# of standards met 09-10	# of standards possible 09-10	Value-added Composite 09-10	Enrollment	Grade Span
1	Dayton Early College Academy, Inc	Charter	96.2	100.5	Effective	Met	14	17	--	366	
2	Pathway School of Discovery	Charter	95.5	92.6	Effective	Met	12	15	Met	699	K-8
3	Stivers School For The Arts	District	95	93.4	Effective	Not Met	14	17	Above	937	7-12
4	Mound Street IT Careers Academy	Charter	91.3	71.8	Effective	Not Met	2	7	--	105	9-12,UNG
5	Richard Allen Academy	Charter	88.1	82.4	Effective	Met	2	6	Above	119	1-8
6	Richard Allen Academy III	Charter	87	90.7	Continuous Improvement	Met	3	10	Below	223	K-7
7	The ISUS Institute of Health Care	Charter	86.4	93	Continuous Improvement	Not Met	2	11	--	93	9-12,UNG
8	Richard Allen Academy II	Charter	86	89.3	Continuous Improvement	Met	3	10	Met	431	K-8
9	Dayton Boys Preparatory Academy	District	85.6	83.7	Continuous Improvement	Met	3	10	Below	224	K-6,P
10	Emerson Academy	Charter	85	81.9	Continuous Improvement	Not Met	4	15	Below	565	K-8
11	Charity Adams Earley Girls Academy	District	84.4	88.4	Continuous Improvement	Met	4	10	Below	299	K-6
12	Horace Mann PreK-8 School	District	84.3	86.9	Continuous Improvement	Not Met	3	15	Met	433	P,K-8
13	New Choices Community School	Charter	83.7	44.3	Continuous Improvement	Met	2	12	--	166	7-12
14	Dayton Leadership Academies-Dayton View Campus	Charter	82.8	77.8	Continuous Improvement	Not Met	2	15	Below	559	K-8
15	David H. Ponitz Career Technology Center	District	82.5	85.2	Continuous Improvement	Not Met	2	12	--	502	9-12
16	The ISUS Institute of Manufacturing	Charter	81	98.8	Continuous Improvement	Not Met	2	4	--	38	9-12,UNG
*17	Valerie PreK-8 School	District	80.8	80.1	Continuous Improvement	Not Met	2	15	Below	473	P,K-8
*17	Miamisburg Secondary Digital Academy	Charter	80.8	81.7	Continuous Improvement	Met	1	7	--	78	7-12
19	Miami Valley Academies	Charter	80.1	76.4	Continuous Improvement	Not Met	6	17	Above	165	K-12
20	Eastmont Park PreK-8 School	District	79.9	72.2	Academic Watch	Not Met	1	15	Above	478	P,K-8
21	Mound Street Health Careers Acadmy	Charter	79	80.2	Academic Watch	Not Met	3	12	--	152	9-12,UNG
22	Thurgood Marshall High School	District	78.4	79	Academic Watch	Not Met	0	12	--	594	9-12
23	Trotwood Fitness & Prep Acad	Charter	77.4	80.8	Academic Watch	Not Met	4	15	Below	313	K-8

24	Mound Street Military Careers Academy	Charter	76.4	87.3	Continuous Improvement	Met	0	7	--	81	9-12,UNG
25	City Day Community School	Charter	75.8	71.4	Continuous Improvement	Met	4	15	Above	144	K-8
*26	Longfellow Alternative School	District	75.1	79.7	Not Rated	Not Met	0	2	--	269	D,H,P,K,1-12
*26	World of Wonder PreK-8 School	District	75.1	71.8	Academic Watch	Not Met	1	15	Above	416	P,K-8
28	Meadowdale High School	District	73.9	68.3	Academic Watch	Not Met	0	12	--	625	9-12
29	Ruskin PreK-8 School	District	73.1	74.1	Academic Watch	Not Met	0	15	Met	451	P,K-8
30	Horizon Science Academy-Dayton	Charter	72.9	81.8	Academic Watch	Not Met	2	10	Above	172	K-12
31	River's Edge Montessori PreK-8 School @ Franklin	District	72.7	74	Academic Emergency	Not Met	1	15	Below	412	K-8
32	Belle Haven PreK-8 School	District	72.5	69	Academic Watch	Not Met	1	15	Met	465	P,K-8
*33	Gorman School	District	72.4	76	Not Rated	Not Met	0	1	--	50	H,P,K,1-8,SN
*33	The ISUS Institute of Construction Technology	Charter	72.4	81.1	Academic Watch	Not Met	1	12	--	75	9-12,UNG
35	Cleveland PreK-8 School	District	72.1	73.3	Academic Watch	Not Met	1	15	Met	484	P,K-8
36	Edison PreK-8 School @ Fairview	District	71	64	Continuous Improvement	Not Met	3	15	Above	400	P,K-8
37	Belmont High School	District	70.2	70	Academic Watch	Not Met	0	12	--	807	9-12
*38	Horizon Science Academy Dayton High School	Charter	70	0	Academic Watch	Not Met	3	16	--	211	K-12
*38	North Dayton School Of Science & Discovery	Charter	70	67.1	Academic Watch	Not Met	1	15	Above	548	K-8
40	Academy Of Dayton	Charter	68.9	58.3	Academic Emergency	Not Met	1	13	Above	116	K,1-8,SN
41	Dayton Leadership Academies-Dayton Liberty Campus	Charter	68.5	71.5	Academic Emergency	Not Met	0	15	Below	613	K-8
42	Dunbar High School	District	68.4	75.8	Academic Emergency	Not Met	1	12	--	590	9-12
43	Kiser PreK-8 School	District	68.3	70	Academic Emergency	Not Met	0	15	Below	480	P,K-8
44	Orville Wright PreK-8 School @ Grant	District	67.7	67.5	Academic Emergency	Not Met	0	15	Below	381	P,K-8
45	Summit Academy Transition High School Dayton	Charter	66.9	71.1	Continuous Improvement	Met	1	6	--	38	8-12,UNG
46	Kemp PreK-8 School	District	66.5	68.5	Academic Emergency	Not Met	0	15	Below	460	P,K-8
47	Meadowdale PreK-8 School	District	64.9	66.5	Academic Emergency	Not Met	1	15	Below	444	P,K-8
48	Wogaman PreK-8 School	District	64	62.2	Academic Emergency	Not Met	1	15	Below	486	P,K-8
49	Patterson/Kennedy PreK-8 School	District	63.4	63.8	Academic Emergency	Not Met	0	15	Met	649	P,K-8
50	Rosa Parks PreK-8 School	District	62.3	57.5	Academic Emergency	Not Met	0	15	Above	419	P,K-8
51	E. J. Brown PreK-8 School	District	60.2	59.1	Academic Emergency	Not Met	0	15	Below	470	P,K-8
52	Fairview PreK-7 School	District	59.2	61.3	Academic Emergency	Not	0	12	Met	331	P,K,1-7

						Met					
53	Summit Academy Dayton	Charter	58.5	50.9	Academic Emergency	Not Met	1	4	Met	61	K,1-12,UNG
54	Louise Troy PreK-8 School	District	56.9	65.6	Academic Emergency	Not Met	0	15	Below	422	P,K-8
55	Westwood PreK-8 School	District	55.7	57.3	Academic Emergency	Not Met	0	15	Met	425	P,K-8
56	Dayton Technology Design High School	Charter	55.4	58.8	Academic Emergency	Not Met	2	12	--	120	10-12
*57	Klepinger Community School	Charter	52.8	50	Academic Emergency	Not Met	1	10	Met	68	K-8
*57	New City School	Charter	52.8	55.2	Academic Emergency	Not Met	0	7	Met	113	K-12
59	Tech Con Institute	Charter	42.9	55.4	Academic Emergency	Not Met	0	7	--	60	9-12
60	Gardendale Academy	District	40.6	55.3	Not Rated	Not Met	0	1	--	57	K,1-12,SN
61	General Chappie James Leadership Academy	Charter	30.7	16.3	Not Rated	Not Met	0	2	--	99	9-12

Source: Ohio Department of Education

Notes: 1) Rankings are based on Performance Index score for the 2009-10 school year. 2) Schools without a Performance Index score were removed.

\* These schools were tied for the same ranking number.