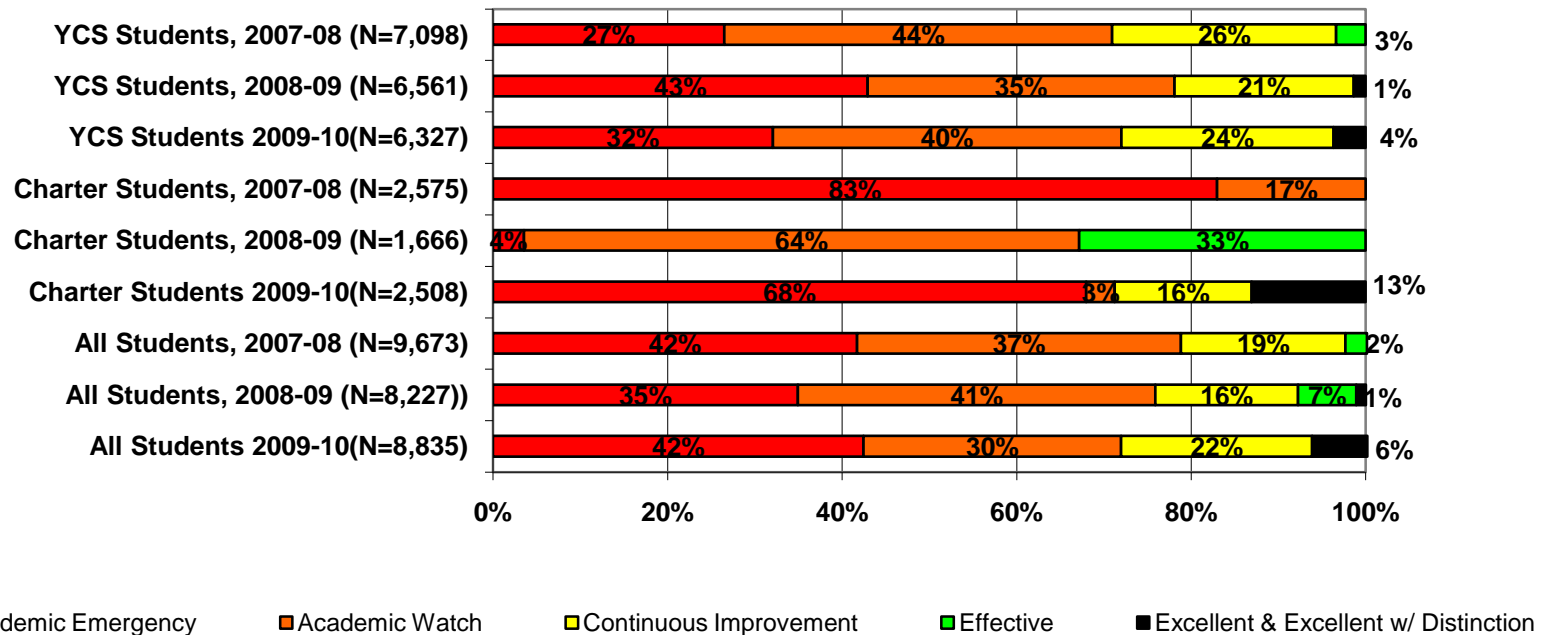




Detailed Analysis of School Performance in Youngstown (2009-10)

Graph I: Percent of Youngstown Students in Public Schools by State Designation (2007-08, 2008-09, and 2009-10)



Source: Ohio Department of Education interactive Local Report Card

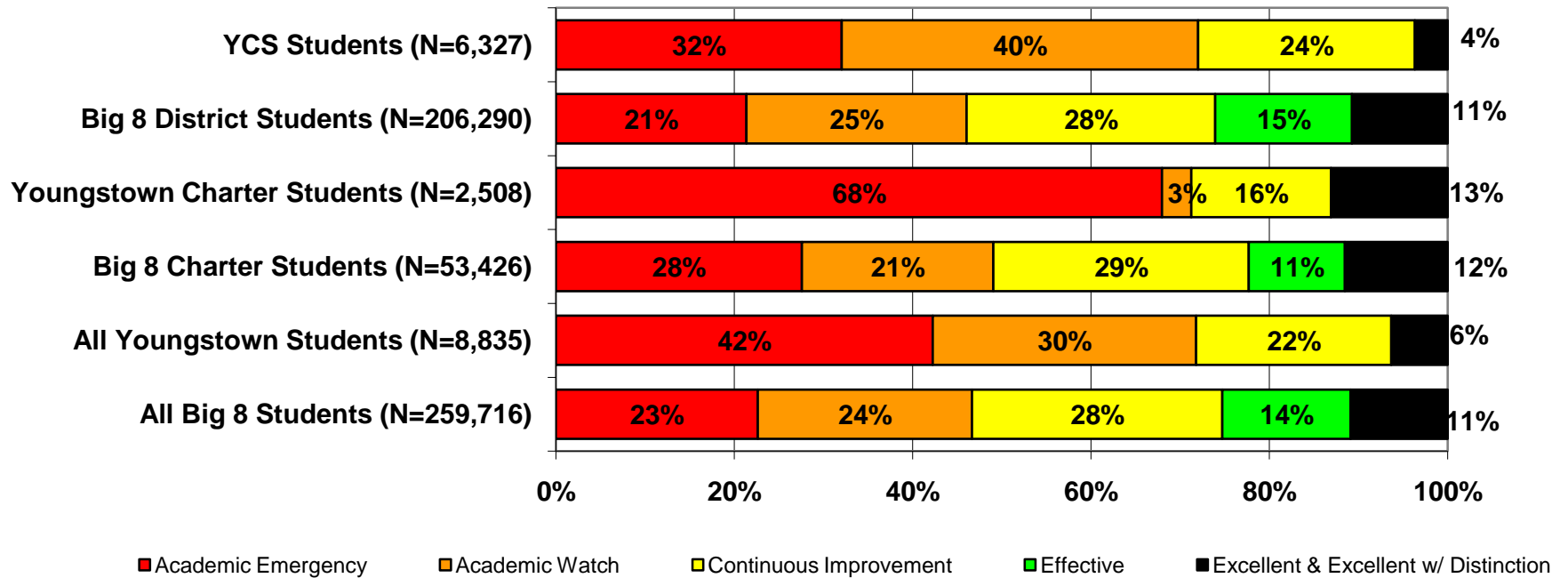
Note: This chart does not include students in schools that are unrated and students attending charter e-schools.

Percent of Youngstown Students in Public Schools (District and Charter) by State Designation.

Graph I shows the percent of Youngstown students in district and charter schools by state designation for the 2007-08, 2008-09, and 2009-10 school years.

In Youngstown only six percent of the children attending a public school (district and charter) are in a school rated A or B by the state. The percent of Youngstown students (district and charter) attending schools rated D or F by the state fell only slightly in 2009-10 from 2008-9. Nearly three-quarters (72 percent) of all Youngstown students were in a school rated Academic Emergency or Academic Watch. This is in contrast to 76 percent in the 2008-09 school year. Youngstown charter school students were significantly more likely to attend a school rated Excellent (including Excellent with Distinction) than their district counterparts. Thirteen percent of student in charters went to an A rated school, versus just 4 percent of Youngstown City School District students.

Graph II: Percent of Youngstown Students in Public Schools by State Designation versus the Big 8 Average*



Source: Ohio Department of Education interactive Local Report Card

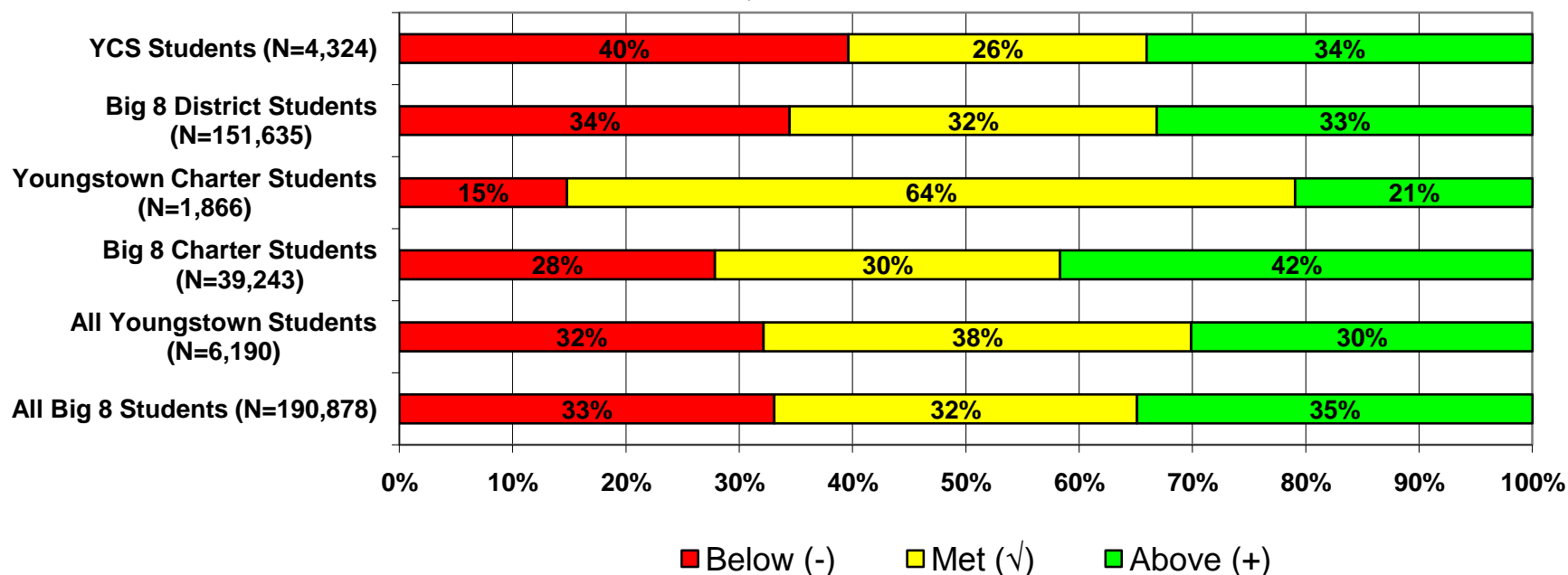
Note: This chart does not include students in schools that are unrated and students attending charter e-schools. Totals may not equal 100 due to rounding.

* The Big 8 districts are defined as Ohio’s largest urban districts: Akron, Canton, Cincinnati, Cleveland, Columbus, Dayton, Toledo, and Youngstown.

Percent of Youngstown Students in Public Schools by State Designation versus the Big 8 Average. Graph II shows how Youngstown district and charter school students performed against the Big 8 averages for district and charter performance. This helps to put the performance of students in Youngstown into a larger context (e.g., how do they perform against other urban students in Ohio?).

Youngstown City School District students were more likely to attend a school rated “D” or “F” by the state, as compared to their Big 8 District peers. Nearly three in four (72 percent) of Youngstown City School District students went to a school in Academic Emergency or Academic Watch, while just under one half (46 percent) of Big 8 District students went to similar schools. Sixty-eight percent of charter school students in Youngstown attend an F rated school while only 28 percent of Big 8 charter students attend failing schools.

Graph III: Percent of Youngstown Students in Public Schools by Value-added Composite Score versus the Big 8 Average (2009-10)



Source: Ohio Department of Education interactive Local Report Card

Note: This chart does not include students in schools that did not receive a value-added composite score or students attending charter e-schools.

Percent of Youngstown Students in Public Schools by Value-added Composite Score versus the Big 8 Average.

Ohio’s local report cards include each school’s “value-added”—how much progress students in grades four through eight made in reading and math over the course of one year compared to how much the state expected them to gain (for a detailed explanation go to: http://www.edexcellence.net/detail/news.cfm?news_id=735&id=130) and for information on changes made to the calculations this year, go to: <http://edexcellence.net/gadfly/index.cfm?issue=591#a6341>). Using this information Ohio determines if each school made “Above Expected Growth,” “Expected Growth,” or “Below Expected Growth.”

Students in public schools in Youngstown (district and charter) are marginally less likely than their Big 8 peers to attend a school that failed to meet the state’s growth expectations (32 percent of Youngstown students versus 33 percent of Big 8 students). Sixty percent of students in Youngstown School District attend a school that achieved at least one year of academic growth last year, falling behind the Big 8 districts (at 65 percent) and Youngstown charter schools (at 85 percent).

Table I: Youngstown Public Schools (District and Charter) Ranked by Performance Index Score

The following pages list Youngstown’s public charter and district schools ranked by Performance Index (PI) score[†] for the 2009-10 school year. Numerous other performance indicators are also included, but the Performance Index score was selected for ranking the schools because it provides an overall indication of how well students perform on all tested subjects in grades 3 through 8 and the Ohio Graduation Test.

We strongly encourage readers to look closely at the number of standards met and the number of standards possible. A school with a large number of possible standards and possible standards met has gotten a large percentage of students to the state proficiency goals.

We also encourage readers to consider schools’ value-added results. Where the Performance Index reflects student achievement at one point in time, value-added tells us how a school is doing at helping its students make progress from year to year. For more on value-added, see Fordham’s value-added primer on our website: http://www.edexcellence.net/detail/news.cfm?news_id=735&id=130.

[†] The Performance Index score is calculated by multiplying the percentage of students that are untested, below basic/limited, basic, proficient, accelerated, or advanced by weights ranging from 0 for untested to 1.2 for advanced students. The totals are then summed up to obtain the school or district’s PI score. PI scores range from 0 to 120, and the state has set the goal for all schools to achieve a PI score of 100 or better. For a complete description of how the Ohio Department of Education calculates the PI score see their website here: <http://www.ode.state.oh.us/GD/DocumentManagement/DocumentDownload.aspx?DocumentID=29878>.

Table I: Youngstown Public Schools (District and Charter) Ranked by Performance Index Score

Rank	Building Name	Type	PI Score 09-10	PI Score 08-09	Designation 09-10	Overall AYP 09-10	# of standards met 09-10	# of standards possible 09-10	Value-added Composite 09-10	Enrollment	Grade Span
1	Youngstown Early College	District	101.7	103.9	Excellent	Met	12	12	--	232	9-12
2	Youngstown Community School	Charter	91.4	79.8	Excellent	Met	7	10	Above	328	K-6
3	Rayen Early College	District	84.6	0	Continuous Improvement	Met	2	3	Above	90	7
4	Kirkmere Elementary School	District	82.2	81.6	Continuous Improvement	Not Met	2	10	Met	361	K-6
5	Paul C Bunn Elementary School	District	79.8	75.8	Continuous Improvement	Met	2	10	Met	378	K-6
6	Chaney High School	District	78.8	79.1	Academic Watch	Not Met	1	12	--	834	9-12
7	William Holmes McGuffey Elementary	District	78.5	77.3	Continuous Improvement	Not Met	1	10	Above	710	K-6
8	M.L. King	District	75.5	80	Academic Watch	Not Met	0	5	Below	438	K-4
9	Life Skills Ctr Of Youngstown	Charter	74.1	55.5	Continuous Improvement	Not Met	0	12	--	349	9-12
10	East High School	District	72.5	71.6	Academic Watch	Not Met	1	12	--	937	9-12
11	Legacy Acad For Leaders & Arts	Charter	72.3	74.9	Academic Watch	Not Met	2	8	Below	82	K-8
12	Volney Rogers Junior High School	District	70.8	69	Academic Watch	Not Met	0	6	Below	318	7-8
13	Eagle Heights Academy	Charter	69.8	65.9	Academic Emergency	Not Met	2	15	Met	705	K-8
14	Harding Elementary School	District	69.2	87.3	Academic Emergency	Not Met	1	10	Below	453	K-6
15	Taft Elementary School	District	68	66.5	Academic Emergency	Not Met	1	10	Above	468	K-6
16	Stambaugh Charter Academy	Charter	67.8	72.7	Academic Emergency	Not Met	1	15	Met	494	K-12
17	Williamson Elementary School	District	65.7	61.8	Academic Emergency	Not Met	1	10	Met	398	K-6
18	NovaNet High School	District	64.9	31.7	Not Rated	Not Met	1	2	--	127	5-12
19	Youngstown Academy of Excellence	Charter	64.5	62.7	Academic Emergency	Not Met	1	15	Below	194	K-12
20	P. Ross Berry Middle School	District	63.4	60.1	Academic Emergency	Not Met	1	11	Below	402	5-8
21	Mollie Kessler	Charter	61.3	56.1	Academic Emergency	Not Met	1	8	Above	63	1-8
22	Alpha: School of Excellence for Boys	District	60.4	59.9	Academic Emergency	Not Met	1	6	Above	205	7-8
23	Mahoning Valley Opportunity Center	Charter	59.1	65.2	Academic Emergency	Not Met	0	12	--	130	9-12
24	Odyssey: School of Possibilities	District	57.5	63.9	Academic Emergency	Not Met	0	6	Below	103	3-12
25	Summit Academy Secondary - Youngstown	Charter	52.6	66.4	Academic Emergency	Not Met	0	12	--	119	8-12,UNG
26	Summit Academy-Youngstown	Charter	52.2	56.5	Academic Emergency	Not Met	0	15	Below	190	6-9,UNG
27	Mahoning County High School	Charter	51.6	0	Continuous Improvement	Met	0	6	--	44	9-12

Source: Ohio Department of Education

Notes: 1) Rankings are based on Performance Index score for the 2009-10 school year. 2) Schools without a Performance Index score were removed.

* These schools were tied for the same ranking number.